



EDB

EDB Failover Manager

Release 4.0

User Guide

Dec 20, 2020

Contents

1	What's New	2
2	Failover Manager Overview	3
2.1	Prerequisites	5
3	Installing Failover Manager	8
3.1	Installing Failover Manager on a RedHat or CentOS Host	8
3.1.1	Installing on a RHEL or CentOS 7 PPCLE HOST	9
3.1.2	Installing on a RHEL or CentOS 7 HOST	10
3.1.3	Installing on a RHEL or CentOS 8 HOST	10
3.2	Installing Failover Manager on a Debian or Ubuntu Host	12
3.2.1	Installing on a Debian 9 or Debian 10 Host	12
3.2.2	Installing on an Ubuntu 18.04 or 20.04 Host	14
3.3	Installing Failover Manager on a SLES Host	15
3.4	Performing post-installation tasks	16
3.5	Installation Locations	16
4	Configuring Failover Manager	17
4.1	The Cluster Properties File	17
4.1.1	Specifying Cluster Properties	18
	Encrypting Your Database Password	43
4.2	The Cluster Members File	46
4.3	Extending Failover Manager Permissions	47
4.3.1	Running Failover Manager without sudo	49
4.4	Using Failover Manager with Virtual IP Addresses	51
5	Using Failover Manager	54
5.1	Managing a Failover Manager Cluster	54
5.1.1	Starting the Failover Manager Cluster	55
5.1.2	Adding Nodes to a Cluster	56

5.1.3	Changing the Priority of a Standby	56
5.1.4	Promoting a Failover Manager Node	57
5.1.5	Stopping a Failover Manager Agent	59
5.1.6	Stopping a Failover Manager Cluster	59
5.1.7	Removing a Node from a Cluster	59
5.2	Running Multiple Agents on a Single Node	61
5.2.1	RHEL 6.x or CentOS 6.x	62
5.2.2	RHEL/CentOS 7.x or RHEL/CentOS 8.x	63
6	Monitoring a Failover Manager Cluster	64
6.1	Reviewing the Cluster Status Report	64
6.2	Monitoring Streaming Replication with Postgres Enterprise Manager	67
7	Using the efm Utility	70
8	Controlling the Failover Manager Service	74
8.1	Using the service Utility on RHEL 6.x and CentOS 6.x	75
8.2	Using the systemctl Utility on RHEL/CentOS 7.x and RHEL/CentOS 8.x	76
9	Controlling Logging	77
9.1	Enabling syslog Log File Entries	79
10	Notifications	81
11	Supported Failover and Failure Scenarios	91
11.1	Primary Database is Down	92
11.2	Standby Database is Down	94
11.3	Primary Agent Exits or Node Fails	95
11.4	Standby Agent Exits or Node Fails	97
11.5	Dedicated Witness Agent Exits / Node Fails	98
11.6	Nodes Become Isolated from the Cluster	99
12	Upgrading an Existing Cluster	100
12.1	Un-installing Failover Manager	102
12.2	Performing a Database Update (Minor Version)	103
13	Troubleshooting	104
14	Configuring Streaming Replication	106
14.1	Limited Support for Cascading Replication	107
15	Configuring SSL Authentication on a Failover Manager Cluster	109
16	Conclusion	111
	Index	113

EDB Failover Manager™

EDB Postgres Failover Manager (EFM) is a high-availability module from EnterpriseDB that enables a Postgres primary node to automatically failover to a Standby node in the event of a software or hardware failure on the primary.

This guide provides information about installing, configuring and using Failover Manager 4.0. For information about the platforms and versions supported by Failover Manager 4.0, visit the EnterpriseDB website at:

<https://www.enterprisedb.com/services-support/edb-supported-products-and-platforms#efm>

This document uses Postgres to mean either the PostgreSQL or EDB Postgres Advanced Server database.

CHAPTER 1

What's New

The following changes have been made to EDB Postgres Failover Manager to create version 3.10:

- Support for the physical replication slot feature of Postgres
- Support for NAT addresses
- Staggering standbys for restarts
- Introduction of a new command to check the status of a local node
- Replace `trigger_file` with `pg_ctl` utility for standby promotion

Failover Manager Overview

An EDB Postgres Failover Manager (EFM) cluster is comprised of Failover Manager processes that reside on the following hosts on a network:

- A Primary node - The Primary node is the primary database server that is servicing database clients.
- One or more Standby nodes - A Standby node is a streaming replication server associated with the Primary node.
- A Witness node - The Witness node confirms assertions of either the Primary or a Standby in a failover scenario. A cluster does not need a dedicated witness node if the cluster contains three or more nodes. If you do not have a third cluster member that is a database host, you can add a dedicated Witness node. A cluster may include more than one witness node.

Traditionally, a *cluster* is a single instance of Postgres managing multiple databases. In this document, the term cluster refers to a Failover Manager cluster. A Failover Manager cluster consists of a Primary agent, one or more Standby agents, and an optional Witness agent that reside on servers in a cloud or on a traditional network and communicate using the JGroups toolkit.

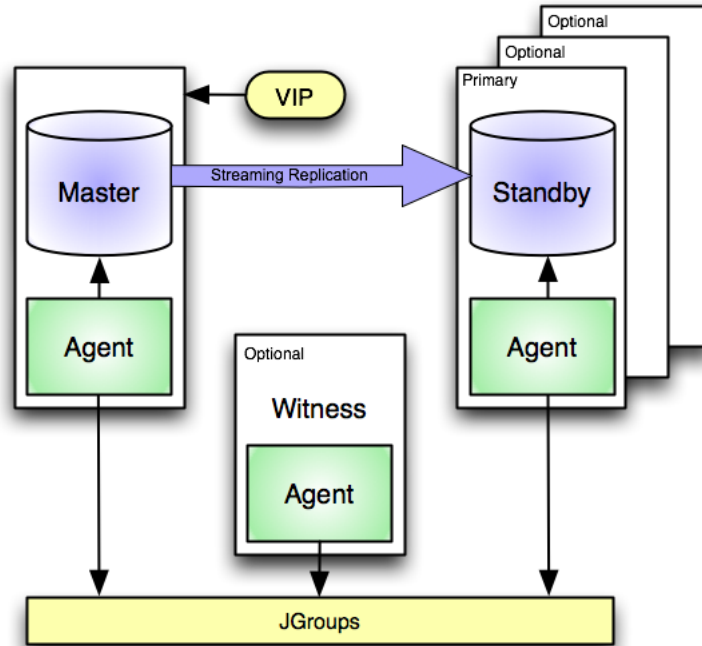


Fig. 1: An EFM scenario employing a Virtual IP address.

When a non-witness agent starts, it connects to the local database and checks the state of the database:

- If the agent cannot reach the database, it will start in idle mode.
- If it finds that the database is in recovery, the agent assumes the role of standby;
- If the database is not in recovery, the agent assumes the role of primary.

In the event of a failover, Failover Manager attempts to ensure that the promoted standby is the most up-to-date standby in the cluster; please note that data loss is possible if the standby node is not in sync with the primary node.

JGroups provides technology that allows Failover Manager to create clusters whose member nodes can communicate with each other and detect node failures.

The figure shown above illustrates a Failover Manager cluster that employs a virtual IP address. You can use a load balancer in place of a *virtual IP address* if you provide your own *script* to re-configure the load balancer in the event of a failure.

2.1 Prerequisites

Before configuring a Failover Manager cluster, you must satisfy the prerequisites described below.

Install Java 1.8 (or later)

Before using Failover Manager, you must first install Java (version 1.8 or later). Failover Manager is tested with OpenJDK, and we strongly recommend installing that version of Java. [Installation instructions for Java](#) are platform specific.

Provide an SMTP Server

You can receive notifications from Failover Manager as specified by a user-defined notification script, by email, or both.

- If you are using email notifications, an SMTP server must be running on each node of the Failover Manager scenario.
- If you provide a value in the `script.notification` property, you can leave the `user.email` field blank; an SMTP server is not required.

If an event occurs, Failover Manager invokes the script (if provided), and sends a notification email to any email addresses specified in the `user.email` parameter of the cluster properties file. For more information about using an SMTP server, visit:

<https://access.redhat.com/site/documentation>

Configure Streaming Replication

Failover Manager requires that PostgreSQL streaming replication be configured between the Primary node and the Standby node or nodes. Failover Manager does not support other types of replication.

On database versions 11 (or prior), unless specified with the `-sourcnode` option, a `recovery.conf` file is copied from a random standby node to the stopped primary during switchover. You should ensure that the paths within the `recovery.conf` file on your standby nodes are consistent before performing a switchover. For more information about the `-sourcnode` option, please see *Promoting a Failover Manager Node*.

On database version 12, the `primary_conninfo` and `restore_command` properties are copied to the stopped primary during switchover (unless otherwise specified with the `-sourcnode` option).

Modify the `pg_hba.conf` File

You must modify the `pg_hba.conf` file on the Primary and Standby nodes, adding entries that allow communication between the all of the nodes in the cluster. The following example demonstrates entries that might be made to the `pg_hba.conf` file on the Primary node:

```
# access for itself
host fmdb efm 127.0.0.1/32 md5
# access for standby
host fmdb efm 192.168.27.1/32 md5
# access for witness
host fmdb efm 192.168.27.34/32 md5
```

Where:

`efm` specifies the name of a valid database user.

`fmdb` specifies the name of a database to which the `efm` user may connect.

By default, the `pg_hba.conf` file resides in the `data` directory, under your Postgres installation. After modifying the `pg_hba.conf` file, you must reload the configuration file on each node for the changes to take effect. You can use the following command:

```
# systemctl reload edb-as-x
```

Where `x` specifies the Postgres version.

Using Autostart for the Database Servers

If a Primary node reboots, Failover Manager may detect the database is down on the Primary node and promote a Standby node to the role of Primary. If this happens, the Failover Manager agent on the (rebooted) Primary node will not get a chance to write the `recovery.conf` file; the `recovery.conf` file prevents the database server from starting. If this happens, the rebooted Primary node will return to the cluster as a second Primary node.

To prevent this, start the Failover Manager agent before starting the database server. The agent will start in idle mode, and check to see if there is already a primary in the cluster. If there is a primary node, the agent will verify that a `recovery.conf` or `standby.signal` file exists, and the database will not start as a second primary.

Ensure Communication Through Firewalls

If a Linux firewall (i.e. `iptables`) is enabled on the host of a Failover Manager node, you may need to add rules to the firewall configuration that allow `tcp` communication between the Failover Manager processes in the cluster. For example:

```
# iptables -I INPUT -p tcp --dport 7800:7810 -j ACCEPT
/sbin/service iptables save
```

The command shown above opens a small range of ports (7800 through 7810). Failover Manager will connect via the port that corresponds to the port specified in the cluster properties file.

Ensure that the Database user has Sufficient Privileges

The database user specified by the `db.user` property in the `efm.properties` file must have sufficient privileges to invoke the following functions on behalf of Failover Manager:

```
pg_current_wal_lsn()  
pg_last_wal_replay_lsn()  
pg_wal_replay_resume()  
pg_wal_replay_pause()  
pg_reload_conf()
```

The `pg_reload_conf()` privilege is required only if you have the `reconfigure.num.sync` or `reconfigure.sync.primary` property set to `true`.

For detailed information about each of these functions, please see the [PostgreSQL core documentation](#).

The user must also have permissions to read the values of configuration variables; a database superuser can use the PostgreSQL `GRANT` command to provide the permissions needed:

```
GRANT pg_read_all_settings TO user_name;
```

For more information about `pg_read_all_settings`, please see the [PostgreSQL core documentation](#).

Installing Failover Manager

To request credentials that allow you to access an EnterpriseDB repository, visit the EDB website at:

<https://info.enterprisedb.com/rs/069-ALB-339/images/Repository%20Access%2004-09-2019.pdf>

3.1 Installing Failover Manager on a RedHat or CentOS Host

When you install an RPM package that is signed by a source that is not recognized by your system, yum may ask for your permission to import the key to your local server. If prompted, and you are satisfied that the packages come from a trustworthy source, enter `y`, and press `Return` to continue.

During the installation, yum may encounter a dependency that it cannot resolve. If it does, it will provide a list of the required dependencies that you must manually resolve.

Failover Manager must be installed by root. During the installation process, the installer will also create a user named `efm` that has sufficient privileges to invoke scripts that control the Failover Manager service for clusters owned by `enterprisedb` or `postgres`.

After receiving your credentials, you must create the EnterpriseDB repository configuration file on each node of the cluster, and then modify the file to enable access. The following steps provide detailed information about accessing the EnterpriseDB repository; the steps must be performed on each node of the cluster:

3.1.1 Installing on a RHEL or CentOS 7 PPCLE HOST

1. Use the following command to create a configuration file and install Advance Toolchain:

```
rpm --import https://public.dhe.ibm.com/software/server/POWER/
↳Linux/toolchain/at/redhat/RHEL7/gpg-pubkey-6976a827-5164221b

cat > /etc/yum.repos.d/advance-toolchain.repo <<EOF
# Begin of configuration file
[advance-toolchain]
name=Advance Toolchain IBM FTP
baseurl=https://public.dhe.ibm.com/software/server/POWER/
↳Linux/toolchain/at/redhat/RHEL7
failovermethod=priority
enabled=1
gpgcheck=1
gpgkey=ftp://public.dhe.ibm.com/software/server/POWER/Linux/
↳toolchain/at/redhat/RHELX/gpg-pubkey-6976a827-5164221b
# End of configuration file
EOF
```

2. Install the EDB repository:

```
yum -y install https://yum.enterprisedb.com/edbrepos/edb-repo-
↳latest.noarch.rpm
```

3. Replace 'USERNAME:PASSWORD' below with your username and password for the EDB repositories:

```
sed -i "s@<username>:<password>@USERNAME:PASSWORD@" /etc/yum.
↳repos.d/edb.repo
```

4. Install the EPEL repository:

```
yum -y install https://dl.fedoraproject.org/pub/epel/epel-
↳release-latest-7.noarch.rpm
```

5. On RHEL 7 PPCLE, enable the additional repositories to resolve EPEL dependencies:

```
subscription-manager repos --enable "rhel-*-optional-rpms" --
↳enable "rhel-*-extras-rpms" --enable "rhel-ha-for-rhel-*-
↳server-rpms"
```

6. Install the selected package:

```
yum -y install edb-efm40
```

3.1.2 Installing on a RHEL or CentOS 7 HOST

1. To create the repository configuration file, assume superuser privileges, and invoke the following command:

```
yum -y install https://yum.enterprisedb.com/edb-repo-rpms/edb-
↳repo-latest.noarch.rpm
```

2. Replace 'USERNAME:PASSWORD' below with your username and password for the EDB repositories:

```
sed -i "s@<username>:<password>@USERNAME:PASSWORD@" /etc/yum.
↳repos.d/edb.repo
```

3. Install the EPEL repository:

```
yum -y install https://dl.fedoraproject.org/pub/epel/epel-
↳release-latest-7.noarch.rpm
```

4. On RHEL 7, enable the additional repositories to resolve dependencies:

```
subscription-manager repos --enable "rhel-*-optional-rpms" --
↳enable "rhel-*-extras-rpms" --enable "rhel-ha-for-rhel-*-
↳server-rpms"
```

5. Install the selected packages:

```
yum -y install edb-efm40
```

3.1.3 Installing on a RHEL or CentOS 8 HOST

1. To create the repository configuration file, assume superuser privileges, and invoke the following command:

```
dnf -y install https://yum.enterprisedb.com/edbrepos/edb-repo-
↳latest.noarch.rpm
```

2. Replace 'USERNAME:PASSWORD' below with your username and password for the EDB repositories:

```
sed -i "s@<username>:<password>@USERNAME:PASSWORD@" /etc/yum.
↳repos.d/edb.repo
```

3. Install the EPEL repository:

On CentOS 8

```
dnf -y install epel-release
```

On RHEL 8

```
dnf -y install https://dl.fedoraproject.org/pub/epel/epel-  
↪release-latest-8.noarch.rpm
```

4. Enable additional repositories to resolve EPEL dependencies:

On CentOS 8:

```
dnf config-manager --set-enabled PowerTools
```

On RHEL 8:

```
ARCH=$( /bin/arch ) subscription-manager repos --enable  
↪"codeready-builder-for-rhel-8-${ARCH}-rpms"
```

6. Disable the built-in PostgreSQL module:

```
dnf -qy module disable postgresql
```

6. Install the selected packages:

```
dnf -y install edb-efm40
```

3.2 Installing Failover Manager on a Debian or Ubuntu Host

To install Failover Manager, you must have credentials that allow access to the EnterpriseDB repository. To request credentials for the repository, visit the EnterpriseDB website at:

<https://www.enterprisedb.com/user/login>

The following steps will walk you through using the EnterpriseDB apt repository to install Failover Manager.

3.2.1 Installing on a Debian 9 or Debian 10 Host

1. Assume superuser privileges:

```
sudo su -
```

2. Configure the EnterpriseDB repository by substituting your EnterpriseDB credentials for the `username` and `password` placeholders in the following commands:

On Debian 9

```
sh -c 'echo "deb https://username:password@apt.enterprisedb.com/$(lsb_release -cs)-edb/ $(lsb_release -cs) main" > /etc/apt/sources.list.d/edb-$(lsb_release -cs).list'
```

On Debian 10

```
sh -c 'echo "deb [arch=amd64] https://apt.enterprisedb.com/$(lsb_release -cs)-edb/ $(lsb_release -cs) main" > /etc/apt/sources.list.d/edb-$(lsb_release -cs).list'
```

```
sh -c 'echo "machine apt.enterprisedb.com login <username> password <password>" > /etc/apt/auth.conf.d/edb.conf'
```

3. Add support to your system for secure APT repositories:

```
apt-get install apt-transport-https
```

4. Add the EDB signing key:

```
wget -q -O - https://<username>:<password>@apt.enterprisedb.com/edb-deb.gpg.key | apt-key add -
```

5. Update the repository meta data:

```
apt-get update
```

6. Install Failover Manager:

```
apt-get -y install edb-efm40
```


3.2.2 Installing on an Ubuntu 18.04 or 20.04 Host

1. Assume superuser privileges:

```
sudo su -
```

2. Configure the EnterpriseDB repository by substituting your EnterpriseDB credentials for the `username` and `password` placeholders in the following commands:

On Ubuntu 18.04

```
sh -c 'echo "deb https://username:password@apt.enterprisedb.com/$(lsb_release -cs)-edb/ $(lsb_release -cs) main" > /etc/apt/sources.list.d/edb-$(lsb_release -cs).list'
```

On Ubuntu 20.04

```
sh -c 'echo "deb [arch=amd64] https://apt.enterprisedb.com/$(lsb_release -cs)-edb/ $(lsb_release -cs) main" > /etc/apt/sources.list.d/edb-$(lsb_release -cs).list'

sh -c 'echo "machine apt.enterprisedb.com login <username> password <password>" > /etc/apt/auth.conf.d/edb.conf'
```

4. Add support to your system for secure APT repositories:

```
apt-get install apt-transport-https
```

4. Add the EDB signing key:

```
wget -q -O - https://<username>:<password>@apt.enterprisedb.com/edb-deb.gpg.key | apt-key add -
```

5. Update the repository meta data:

```
apt-get update
```

6. Install Failover Manager:

```
apt-get -y install edb-efm40
```

3.3 Installing Failover Manager on a SLES Host

To install Failover Manager, you must have credentials that allow access to the EnterpriseDB repository. To request credentials for the repository, visit the EnterpriseDB website at:

<https://www.enterprisedb.com/repository-access-request>

You can use the zypper package manager to install a Failover Manager agent on an SLES 12 host. zypper will attempt to satisfy package dependencies as it installs a package, but requires access to specific repositories that are not hosted at EnterpriseDB.

1. You must assume superuser privileges and stop any firewalls before installing Failover Manager. Then, use the following commands to add EnterpriseDB repositories to your system:

```
zypper addrepo https://zypp.enterprisedb.com/suse/edb-sles.repo
```

2. The commands create the repository configuration files in the `/etc/zypp/repos.d` directory. Then, use the following command to refresh the metadata on your SLES host to include the EnterpriseDB repository:

```
zypper refresh
```

When prompted, provide credentials for the repository, and specify a to always trust the provided key, and update the metadata to include the EnterpriseDB repository.

3. You must also add SUSEConnect and the SUSE Package Hub extension to the SLES host, and register the host with SUSE, allowing access to SUSE repositories. Use the commands:

```
zypper install SUSEConnect
SUSEConnect -r <registration_number> -e <user_id>
SUSEConnect -p PackageHub/12.4/x86_64
SUSEConnect -p sle-sdk/12.4/x86_64
```

4. Install SUSEConnect to register the host with SUSE, allowing access to SUSE repositories:

```
zypper addrepo https://download.opensuse.org/repositories/Apache:/
↳Modules/SLE_12_SP4/Apache:Modules.repo
```

5. Install OpenJDK (version 1.8) for Java based components:

```
zypper -n install java-1_8_0-openjdk
```

6. Now you can use the zypper utility to install a Failover Manager agent:

```
zypper -n install edb-efm40
```

For detailed information about registering a SUSE host, visit:

<https://www.suse.com/support/kb/doc/?id=7016626>

3.4 Performing post-installation tasks

If you are using Failover Manager to monitor a cluster owned by a user other than `enterprisedb` or `postgres`, see *Extending Failover Manager Permissions* .

After installing Failover Manager on each node of the cluster, you must:

1. Create the *cluster properties file* on each node.
2. Create the *cluster members file* on each node.
3. If applicable, configure and test virtual IP address settings and any scripts that are identified in the cluster properties file.
4. Start the Failover Manager agent on each node of the cluster. For more information about controlling the Failover Manager service, see the section *Controlling the Failover Manager Service*.

3.5 Installation Locations

Failover Manager components are installed in the following locations:

Component	Location
Executables	/usr/edb/efm-4.0/bin
Libraries	/usr/edb/efm-4.0/lib
Cluster configuration files	/etc/edb/efm-4.0
Logs	/var/log/efm-4.0
Lock files	/var/lock/efm-4.0
Log rotation file	/etc/logrotate.d/efm-4.0
sudo configuration file	/etc/sudoers.d/efm-40
Binary to access VIP without sudo	/usr/edb/efm-4.0/bin/secure

Configuring Failover Manager

Configurable Failover Manager properties are specified in two user-modifiable files:

- *efm.properties*
- *efm.nodes*

4.1 The Cluster Properties File

Each node in a Failover Manager cluster has a properties file (by default, named `efm.properties`) that contains the properties of the individual node on which it resides. The Failover Manager installer creates a file template for the properties file named `efm.properties.in` in the `/etc/edb/efm-4.0` directory.

After completing the Failover Manager installation, you must make a working copy of the template before modifying the file contents:

```
# cp /etc/edb/efm-4.0/efm.properties.in /etc/edb/efm-4.0/efm.  
->properties
```

After copying the template file, change the owner of the file to `efm`:

```
# chown efm:efm efm.properties
```

Please note: : By default, Failover Manager expects the cluster properties file to be named `efm.properties`. If you name the properties file something other than `efm.properties`, you must modify the service script or unit file to instruct Failover Manager to use a different name.

After creating the cluster properties file, add (or modify) configuration parameter values as required. For detailed information about each property, see *Specifying Cluster Properties*.

The property files are owned by `root`. The Failover Manager service script expects to find the files in the `/etc/edb/efm-4.0` directory. If you move the property file to another location, you must create a symbolic link that specifies the new location.

Please note: : All user scripts referenced in the properties file will be invoked as the Failover Manager user.

4.1.1 Specifying Cluster Properties

You can use the properties listed in the cluster properties file to specify connection properties and behaviors for your Failover Manager cluster. Modifications to property settings will be applied when Failover Manager starts. If you modify a property value you must restart Failover Manager to apply the changes.

Property values are case-sensitive. Note that while Postgres uses quoted strings in parameter values, Failover Manager does not allow quoted strings in property values. For example, while you might specify an IP address in a Postgres configuration parameter as:

```
listen_addresses='192.168.2.47'
```

Failover Manager requires that the value *not* be enclosed in quotes:

```
bind.address=192.168.2.54:7800
```

Use the properties in the `efm.properties` file to specify connection, administrative, and operational details for Failover Manager.

Legends: In the following table:

- A: Required on Agent node
- W: Required on Witness node
- Y : Yes

Table 1: Cluster Properties

Property Name	A	W	Default Value	Comments
<i>db.user</i>	Y	Y		Username for the database
<i>db.password.encrypted</i>	Y	Y		Password encrypted using 'efm encrypt'
<i>db.port</i>	Y	Y		This value must be same for all the agents
<i>db.database</i>	Y	Y		Database name

continues on next page

Table 1 – continued from previous page

Property Name	A	W	Default Value	Comments
<i>db.service.owner</i>	Y			Owner of \$PGDATA dir for db.database
<i>db.service.name</i>				Required if running the database as a service
<i>db.bin</i>	Y			Directory containing the pg_controldata/pg_ctl commands such as '/usr/edb/as12/bin'
<i>db.data.dir</i>	Y			Same as the output of query 'show data_directory;'
<i>db.config.dir</i>				Same as the output of query 'show config_file;'. Should be specified if it is not same as <i>db.data.dir</i>
<i>jdbc.sslmode</i>	Y	Y	disable	See the <i>note</i>
<i>user.email</i>				This value must be same for all the agents; can be left blank if using a notification script
<i>from.email</i>			efm@localhost	Leave blank to use the default efm@localhost
<i>notification.level</i>	Y	Y	INFO	See the <i>list of notifications</i>
<i>notification.text.prefix</i>				
<i>script.notification</i>				Required if user.email property is not used; both parameters can be used together
<i>bind.address</i>	Y	Y		Example: <ip_address>:<port>
<i>external.address</i>				Example: <ip_address/hostname>
<i>admin.port</i>	Y	Y	7809	Modify if the default port is already in use
<i>is.witness</i>	Y	Y		See description
<i>local.period</i>	Y		10	
<i>local.timeout</i>	Y		60	
<i>local.timeout.final</i>	Y		10	
<i>remote.timeout</i>	Y	Y	10	
<i>node.timeout</i>	Y	Y	50	This value must be same for all the agents
<i>encrypt.agent.messages</i>	Y	Y	false	This value must be same for all the agents
<i>stop.isolated.primary</i>	Y		true	
<i>stop.failed.primary</i>	Y		true	
<i>primary.shutdown.as.failure</i>	Y	Y	false	
<i>update.physical.slots.period</i>	Y		0	

continues on next page

Table 1 – continued from previous page

Property Name	A	W	Default Value	Comments
<i>ping.server.ip</i>	Y	Y	8.8.8.8	
<i>ping.server.command</i>	Y	Y	/bin/ping -q -c3 -w5	
<i>auto.allow.hosts</i>	Y	Y	false	
<i>stable.nodes.file</i>	Y	Y	false	
<i>db.reuse.connection.count</i>	Y		0	
<i>auto.failover</i>	Y	Y	true	
<i>auto.reconfigure</i>	Y		true	This value must be same for all the agents
<i>promotable</i>	Y		true	
<i>use.replay.tiebreaker</i>	Y	Y	true	This value must be same for all the agents
<i>standby.restart.delay</i>			0	
<i>application.name</i>				Set to replace the application_name portion of the primary_conninfo entry with this property value before starting the original primary database as a standby.
<i>restore.command</i>				Example: restore.command=scp <db_service_owner>@%h: <archive_path>/%f %p
<i>reconfigure.num.sync</i>	Y		false	
<i>reconfigure.sync.primary</i>	Y		false	
<i>minimum.standbys</i>	Y	Y	0	This value must be same for all the nodes
<i>recovery.check.period</i>	Y		2	
<i>restart.connection.timeout</i>			60	
<i>auto.resume.period</i>	Y		0	
<i>virtual.ip</i>			(see virtual.ip.single)	Leave blank if you do not specify a VIP
<i>virtual.ip.interface</i>				Required if you specify a VIP
<i>virtual.ip.prefix</i>				Required if you specify a VIP
<i>virtual.ip.single</i>	Y	Y	Yes	This value must be same for all the nodes
<i>check.vip.before.promotion</i>	Y	Y	Yes	

continues on next page

Table 1 – continued from previous page

Property Name	A	W	Default Value	Comments
<i>script.load.balancer.attach</i>				Example: script.load.balancer.attach= /<path>/<attach_script> %h %t
<i>script.load.balancer.detach</i>				Example: script.load.balancer.detach= /<path>/<detach_script> %h %t
<i>script.fence</i>				Example: script.fence= /<path>/<script_name> %p %f
<i>script.post.promotion</i>				Example: script.post.promotion= /<path>/<script_name> %f %p
<i>script.resumed</i>				Example: script.resumed= /<path>/<script_name>
<i>script.db.failure</i>				Example: script.db.failure= /<path>/<script_name>
<i>script.primary.isolated</i>				Example: script.primary.isolated= /<path>/<script_name>
<i>script.remote.pre.promotion</i>				Example: script.remote.pre.promotion= /<path>/<script_name> %p
<i>script.remote.post.promotion</i>				Example: script.remote.post.promotion= /<path>/<script_name> %p

continues on next page

Table 1 – continued from previous page

Property Name	A	W	Default Value	Comments
<i>script.custom.monitor</i>				Example: script.custom.monitor= /<path>/<script_name>
<i>custom.monitor.interval</i>				Required if a custom monitoring script is specified
<i>custom.monitor.timeout</i>				Required if a custom monitoring script is specified
<i>custom.monitor.safe.mode</i>				Required if a custom monitoring script is specified
<i>sudo.command</i>	Y	Y	sudo	
<i>sudo.user.command</i>	Y	Y	sudo -u %u	
<i>lock.dir</i>				If not specified, defaults to '/var/lock/efm-<version>'
<i>log.dir</i>				If not specified, defaults to '/var/log/efm-<version>'
<i>syslog.host</i>			localhost	
<i>syslog.port</i>			514	
<i>syslog.protocol</i>				
<i>syslog.facility</i>			UDP	
<i>file.log.enabled</i>	Y	Y	true	
<i>syslog.enabled</i>	Y	Y	false	
<i>jgroups.loglevel</i>			info	
<i>efm.loglevel</i>			info	
<i>jvm.options</i>			-Xmx128m	

Use the following properties to specify connection details for the Failover Manager cluster:

```
# The value for the password property should be the output from
# 'efm encrypt' -- do not include a cleartext password here. To
# prevent accidental sharing of passwords among clusters, the
# cluster name is incorporated into the encrypted password. If
# you change the cluster name (the name of this file), you must
# encrypt the password again with the new name.
# The db.port property must be the same for all nodes.
db.user=
db.password.encrypted=
db.port=
db.database=
```

The `db.user` specified must have sufficient privileges to invoke selected PostgreSQL commands on behalf of Failover Manager. For more information, please see *Prerequisites*.

For information about encrypting the password for the database user, see *Encrypting Your Database Password*.

Use the `db.service.owner` property to specify the name of the operating system user that owns the cluster that is being managed by Failover Manager. This property is not required on a dedicated witness node.

```
# This property tells EFM which OS user owns the $PGDATA dir for
# the 'db.database'. By default, the owner is either 'postgres'
# for PostgreSQL or 'enterprisedb' for EDB Postgres Advanced
# Server. However, if you have configured your db to run as a
# different user, you will need to copy the /etc/sudoers.d/efm-XX
# conf file to grant the necessary permissions to your db owner.
#
# This username must have write permission to the
# 'db.data.dir' specified below.
db.service.owner=
```

Specify the name of the database service in the `db.service.name` property if you use the service or `systemctl` command when starting or stopping the service.

```
# Specify the proper service name in order to use service commands
# rather than pg_ctl to start/stop/restart a database. For example, if
# this property is set, then 'service <name> restart' or 'systemctl
# restart <name>'
# (depending on OS version) will be used to restart the database rather
# than pg_ctl.
# This property is required if running the database as a service.
db.service.name=
```

You should use the same service control mechanism (`pg_ctl`, `service`, or `systemctl`) each time you start or stop the database service. If you use the `pg_ctl` program to control the service, specify the location of the `pg_ctl` program in the `db.bin` property.

```
# Specify the directory containing the pg_controldata/pg_ctl commands,
# for example:
# /usr/edb/as11/bin. Unless the db.service.name property is used, the
# pg_ctl command is used to start/stop/restart databases as needed
# after a failover or switchover. This property is required.
db.bin=
```

Use the `db.data.dir` property to specify the location to which a recovery file will be written on the Primary node of the cluster during promotion. This property is required on primary and standby nodes; it is not required on a dedicated witness node.

```
# For database version 12 and up, this is the directory where a
# standby.signal file will exist for a standby node. For previous
```

(continues on next page)

(continued from previous page)

```
# versions, this is the location of the db recovery.conf file on
# the node.
# After a failover, the recovery.conf files on remaining standbys are
# changed to point to the new primary db (a copy of the original is
# →made
# first). On a primary node, a recovery.conf file will be written
# →during
# failover and promotion to ensure that the primary node can not be
# restarted as the primary database.
# This corresponds to database environment variable PGDATA and should
# be same as the output of query 'show data_directory;' on respective
# database.
db.data.dir=
```

Use the `db.config.dir` property to specify the location of database configuration files if they are not stored in the same directory as the `recovery.conf` or `standby.signal` file. This should be the value specified by the `config_file` parameter directory of your Advanced Server or PostgreSQL installation. This value will be used as the location of the Postgres data directory when stopping, starting, or restarting the database.

```
# Specify the location of database configuration files if they are
# not contained in the same location as the recovery.conf or
# standby.signal file. This is most likely the case for Debian
# installations. The location specified will be used as the -D value
# (the location of the data directory for the cluster) when calling
# pg_ctl to start or stop the database. If this property is blank,
# the db.data.dir location specified by the db.data.dir property will
# be used. This corresponds to the output of query 'show config_file;'
# on respective database.
db.config.dir=
```

For more information about database configuration files, visit the [PostgreSQL website](#).

Use the `jdbc.sslmode` property to instruct Failover Manager to use SSL connections; by default, SSL is disabled.

```
# Use the jdbc.sslmode property to enable ssl for EFM
# connections. Setting this property to anything but 'disable'
# will force the agents to use 'ssl=true' for all JDBC database
# connections (to both local and remote databases).
# Valid values are:
#
# disable - Do not use ssl for connections.
# verify-ca - EFM will perform CA verification before allowing
# the certificate.
# require - Verification will not be performed on the server
```

(continues on next page)

(continued from previous page)

```
# certificate.
jdbc.sslmode=disable
```

Note: If you set the value of `jdbc.sslmode` to `verify-ca` and you want to use Java trust store for certificate validation, you need to set the following value:

```
jdbc.properties=sslfactory=org.postgresql.ssl.
DefaultJavaSSLFactory
```

For information about configuring and using SSL, please see:

<https://www.postgresql.org/docs/current/static/ssl-tcp.html>

and

<https://jdbc.postgresql.org/documentation/head/ssl.html>

Use the `user.email` property to specify an email address (or multiple email addresses) that will receive any notifications sent by Failover Manager.

```
# Email address(es) for notifications. The value of this
# property must be the same across all agents. Multiple email
# addresses must be separated by space. If using a notification
# script instead, this property can be left blank.
user.email=
```

The `from.email` property specifies the value that will be used as the sender's address on any email notifications from Failover Manager. You can:

- leave `from.email` blank to use the default value (`efm@localhost`).
- specify a custom value for the email address.
- specify a custom email address, using the `%h` placeholder to represent the name of the node host (e.g., `example@%h`). The placeholder will be replaced with the name of the host as returned by the Linux `hostname` utility.

For more information about notifications, see *Notifications*.

```
# Use the from.email property to specify the from email address that
# will be used for email notifications. Use the %h placeholder to
# represent the name of the node host (e.g. example@%h). The
# placeholder will be replaced with the name of the host as returned
# by the hostname command.
# Leave blank to use the default, efm@localhost.
from.email=
```

Use the `notification.level` property to specify the minimum severity level at which Failover Manager will send user notifications or when a notification script is called. For a complete list of notifications, please see *Notifications*.

```
# Minimum severity level of notifications that will be sent by
# the agent. The minimum level also applies to the notification
# script (below). Valid values are INFO, WARNING, and SEVERE.
# A list of notifications is grouped by severity in the user's
# guide.
notification.level=INFO
```

Use the `notification.text.prefix` property to specify the text to be added to the beginning of every notification.

```
# Text to add to the beginning of every notification. This could
# be used to help identify what the cluster is used for, the role
# of this node, etc. To use multiple lines, add a backslash \ to
# the end of a line of text. To include a newline use \n.
# Example:
# notification.text.prefix=Development cluster for Example dept.\n\
# Used by Dev and QA \
# See Example group for questions.
notification.text.prefix=
```

Use the `script.notification` property to specify the path to a user-supplied script that acts as a notification service; the script will be passed a message subject and a message body. The script will be invoked each time Failover Manager generates a user notification.

```
# Absolute path to script run for user notifications.
#
# This is an optional user-supplied script that can be used for
# notifications instead of email. This is required if not using
# email notifications. Either/both can be used. The script will
# be passed two parameters: the message subject and the message
# body.
script.notification=
```

The `bind.address` property specifies the IP address and port number of the agent on the current node of the Failover Manager cluster.

```
# This property specifies the ip address and port that jgroups
# will bind to on this node. The value is of the form
# <ip>:<port>.
# Note that the port specified here is used for communicating
# with other nodes, and is not the same as the admin.port below,
# used only to communicate with the local agent to send control
# signals.
```

(continues on next page)

(continued from previous page)

```
# For example, <provide_your_ip_address_here>:7800
bind.address=
```

Use the `external.address` property to specify the IP address or hostname that should be used for communication with all other Failover Manager agents in a NAT environment.

```
# This is the ip address/hostname to be used for communication with all
# other Failover Manager agents. All traffic towards this address
# should be routed by the network to the bind.address of the node.
# The value is in the ip/hostname format only. This address will be
# used in scenarios where nodes are on different networks and broadcast
# an IP address other than the bind.address to the external world.
external.address=
```

Use the `admin.port` property to specify a port on which Failover Manager listens for administrative commands.

```
# This property controls the port binding of the administration
# server which is used for some commands (ie cluster-status). The
# default is 7809; you can modify this value if the port is
# already in use.
admin.port=7809
```

Set the `is.witness` property to true to indicate that the current node is a witness node. If `is.witness` is true, the local agent will not check to see if a local database is running.

```
# Specifies whether or not this is a witness node. Witness nodes
# do not have local databases running.
is.witness=
```

The Postgres `pg_is_in_recovery()` function is a boolean function that reports the recovery state of a database. The function returns `true` if the database is in recovery, or `false` if the database is not in recovery. When an agent starts, it connects to the local database and invokes the `pg_is_in_recovery()` function. If the server responds `true`, the agent assumes the role of standby; if the server responds `false`, the agent assumes the role of primary. If there is no local database, the agent will assume an idle state.

Note: If `is.witness` is `true`, Failover Manager will not check the recovery state.

The following properties specify properties that apply to the local server:

- The `local.period` property specifies how many seconds between attempts to contact the database server.
- The `local.timeout` property specifies how long an agent will wait for a positive re-

sponse from the local database server.

- The `local.timeout.final` property specifies how long an agent will wait after the final attempt to contact the database server on the current node. If a response is not received from the database within the number of seconds specified by the `local.timeout.final` property, the database is assumed to have failed.

For example, given the default values of these properties, a check of the local database happens once every 10 seconds. If an attempt to contact the local database does not come back positive within 60 seconds, Failover Manager makes a final attempt to contact the database. If a response is not received within 10 seconds, Failover Manager declares database failure and notifies the administrator listed in the `user.email` property. These properties are not required on a dedicated witness node.

```
# These properties apply to the connection(s) EFM uses to monitor
# the local database. Every 'local.period' seconds, a database
# check is made in a background thread. If the main monitoring
# thread does not see that any checks were successful in
# 'local.timeout' seconds, then the main thread makes a final
# check with a timeout value specified by the
# 'local.timeout.final' value. All values are in seconds.
# Whether EFM uses single or multiple connections for database
# checks is controlled by the 'db.reuse.connection.count'
# property.
local.period=10
local.timeout=60
local.timeout.final=10
```

If necessary, you should modify these values to suit your business model.

Use the `remote.timeout` property to specify how many seconds an agent waits for a response from a remote database server (i.e., how long a standby agent waits to verify that the primary database is actually down before performing failover).

```
# Timeout for a call to check if a remote database is responsive.
# For example, this is how long a standby would wait for a
# DB ping request from itself and the witness to the primary DB
# before performing failover.
remote.timeout=10
```

Use the `node.timeout` property to specify the number of seconds that an agent will wait for a response from a node when determining if a node has failed. The `node.timeout` property value specifies a timeout value for agent-to-agent communication; other timeout properties in the cluster properties file specify values for agent-to-database communication.

```
# The total amount of time in seconds to wait before determining
# that a node has failed or been disconnected from this node.
```

(continues on next page)

(continued from previous page)

```
#
# The value of this property must be the same across all agents.
node.timeout=50
```

Use the `encrypt.agent.messages` property to specify if the messages sent between agents should be encrypted.

```
# Set to true to encrypt messages that are sent between agents.
# This property must be the same on all agents or else the agents
# will not be able to connect.
encrypt.agent.messages=false
```

Use the `stop.isolated.primary` property to instruct Failover Manager to shut down the database if a primary agent detects that it is isolated. When `true` (the default), Failover Manager will stop the database before invoking the script specified in the `script.primary.isolated` property.

```
# Shut down the database after a primary agent detects that it has
# been isolated from the majority of the efm cluster. If set to
# true, efm will stop the database before running the
# 'script.primary.isolated' script, if a script is specified.
stop.isolated.primary=true
```

Use the `stop.failed.primary` property to instruct Failover Manager to attempt to shut down a primary database if it can not reach the database. If `true`, Failover Manager will run the script specified in the `script.db.failure` property after attempting to shut down the database.

```
# Attempt to shut down a failed primary database after EFM can no
# longer connect to it. This can be used for added safety in the
# case a failover is caused by a failure of the network on the
# primary node.
# If specified, a 'script.db.failure' script is run after this attempt.
stop.failed.primary=true
```

Use the `primary.shutdown.as.failure` parameter to indicate that any shutdown of the Failover Manager agent on the primary node should be treated as a failure. If this parameter is set to `true` and the primary agent stops (for any reason), the cluster will attempt to confirm if the database on the primary node is running:

- If the database is reached, a notification will be sent informing you of the agent status.
- If the database is not reached, a failover will occur.

```
# Treat a primary agent shutdown as a failure. This can be set to
# true to treat a primary agent shutdown as a failure situation,
# e.g. during the shutdown of a node, accidental or otherwise.
```

(continues on next page)

(continued from previous page)

```
# Caution should be used when using this feature, as it could
# cause an unwanted promotion in the case of performing primary
# database maintenance.
# Please see the user's guide for more information.
primary.shutdown.as.failure=false
```

The `primary.shutdown.as.failure` property is meant to catch user error, rather than failures, such as the accidental shutdown of a primary node. The proper shutdown of a node can appear to the rest of the cluster like a user has stopped the primary Failover Manager agent (for example to perform maintenance on the primary database). If you set the `primary.shutdown.as.failure` property to `true`, care must be taken when performing maintenance.

To perform maintenance on the primary database when `primary.shutdown.as.failure` is `true`, you should stop the primary agent and wait to receive a notification that the primary agent has failed but the database is still running. Then it is safe to stop the primary database. Alternatively, you can use the `efm stop-cluster` command to stop all of the agents without failure checks being performed.

Use the `update.physical.slots.period` property to define the slot advance frequency for database version 12 and above. When `update.physical.slots.period` is set to a non-zero value, the primary agent will read the current `restart_lsn` of the physical replication slots after every `update.physical.slots.period` seconds, and send this information with its `pg_current_wal_lsn` and `primary_slot_name` (If it is set in the `postgresql.conf` file) to the standbys. If physical slots do not already exist, setting this parameter to a non-zero value will create the slots and then update the `restart_lsn` parameter for these slots. A non-promotable standby will not create new slots but will update them if they exist.

```
# Period in seconds between having the primary agent update promotable
# standbys with physical replication slot information so that
# the cluster will continue to use replication slots after a failover.
# Set to zero to turn off.
update.physical.slots.period=0
```

Use the `ping.server.ip` property to specify the IP address of a server that Failover Manager can use to confirm that network connectivity is not a problem.

```
# This is the address of a well-known server that EFM can ping
# in an effort to determine network reachability issues. It
# might be the IP address of a nameserver within your corporate
# firewall or another server that *should* always be reachable
# via a 'ping' command from each of the EFM nodes.
#
# There are many reasons why this node might not be considered
# reachable: firewalls might be blocking the request, ICMP might
# be filtered out, etc.
```

(continues on next page)

(continued from previous page)

```
#
# Do not use the IP address of any node in the EFM cluster
# (primary, standby, or witness) because this ping server is meant
# to provide an additional layer of information should the EFM
# nodes lose sight of each other.
#
# The installation default is Google's DNS server.
ping.server.ip=8.8.8.8
```

Use the `ping.server.command` property to specify the command used to test network connectivity.

```
# This command will be used to test the reachability of certain
# nodes.
#
# Do not include an IP address or hostname on the end of
# this command - it will be added dynamically at runtime with the
# values contained in 'virtual.ip' and 'ping.server.ip'.
#
# Make sure this command returns reasonably quickly - test it
# from a shell command line first to make sure it works properly.
ping.server.command=/bin/ping -q -c3 -w5
```

Use the `auto.allow.hosts` property to instruct the server to use the addresses specified in the `.nodes` file of the first node started to update the allowed host list. Enabling this property (setting `auto.allow.hosts` to `true`) can simplify cluster start-up.

```
# Have the first node started automatically add the addresses
# from its .nodes file to the allowed host list. This will make
# it faster to start the cluster when the initial set of hosts
# is already known.
auto.allow.hosts=false
```

Use the `stable.nodes.file` property to instruct the server to not rewrite the nodes file when a node joins or leaves the cluster. This property is most useful in clusters with unchanging IP addresses.

```
# When set to true, EFM will not rewrite the .nodes file whenever
# new nodes join or leave the cluster. This can help starting a
# cluster in the cases where it is expected for member addresses
# to be mostly static, and combined with 'auto.allow.hosts' makes
# startup easier when learning failover manager.
stable.nodes.file=false
```

The `db.reuse.connection.count` property allows the administrator to specify the number of times Failover Manager reuses the same database connection to check the database health. The

default value is 0, indicating that Failover Manager will create a fresh connection each time. This property is not required on a dedicated witness node.

```
# This property controls how many times a database connection is
# reused before creating a new one. If set to zero, a new
# connection will be created every time an agent pings its local
# database.
db.reuse.connection.count=0
```

The `auto.failover` property enables automatic failover. By default, `auto.failover` is set to `true`.

```
# Whether or not failover will happen automatically when the primary
# fails. Set to false if you want to receive the failover notifications
# but not have EFM actually perform the failover steps.
# The value of this property must be the same across all agents.
auto.failover=true
```

Use the `auto.reconfigure` property to instruct Failover Manager to enable or disable automatic reconfiguration of remaining Standby servers after the primary standby is promoted to Primary. Set the property to `true` to enable automatic reconfiguration (the default) or `false` to disable automatic reconfiguration. This property is not required on a dedicated witness node. If you are using Advanced Server or PostgreSQL version 11 or earlier, the `recovery.conf` file will be backed up during the reconfiguration process.

```
# After a standby is promoted, Failover Manager will attempt to
# update the remaining standbys to use the new primary. For database
# versions before 12, Failover Manager will back up recovery.conf.
# Then it will change the host parameter of the primary_conninfo entry
# in recovery.conf or postgresql.auto.conf, and restart the database.
# The restart command is contained in either the efm_db_functions or
# efm_root_functions file; default when not running db as an os
# service is: "pg_ctl restart -m fast -w -t <timeout> -D <directory>"
# where the timeout is the local.timeout property value and the
# directory is specified by db.data.dir. To turn off
# automatic reconfiguration, set this property to false.
auto.reconfigure=true
```

Please note: `primary_conninfo` is a space-delimited list of keyword=value pairs.

Use the `promotable` property to indicate that a node should not be promoted. The `promotable` property is ignored when a primary agent is started. This simplifies switching back to the original primary after a switchover or failover. To override the setting, use the `efm set-priority` command at runtime; for more information about the `efm set-priority` command, see *Using the efm Utility*.

```
# A standby with this set to false will not be added to the
# failover priority list, and so will not be available for
```

(continues on next page)

(continued from previous page)

```
# promotion. The property will be used whenever an agent starts
# as a standby or resumes as a standby after being idle. After
# startup/resume, the node can still be added or removed from the
# priority list with the 'efm set-priority' command. This
# property is required for all non-witness nodes.
promotable=true
```

If the same amount of data has been written to more than one standby node, and a failover occurs, the `use.replay.tiebreaker` value will determine how Failover Manager selects a replacement primary. Set the `use.replay.tiebreaker` property to `true` to instruct Failover Manager to failover to the node that will come out of recovery faster, as determined by the log sequence number. To ignore the log sequence number and promote a node based on user preference, set `use.replay.tiebreaker` to `false`.

```
# Use replay LSN value for tiebreaker when choosing a standby to
# promote before using failover priority. Set this property to true to
# consider replay location as more important than failover priority
# (as seen in cluster-status command) when choosing the "most ahead"
# standby to promote.
use.replay.tiebreaker=true
```

Use the `standby.restart.delay` property to specify the time in seconds that the standby should wait before it gets reconfigured (stopped/started) to follow the new primary after a promotion.

```
# Time in seconds for this standby to delay restarting to follow the
# primary after a promotion. This can be used to have standbys restart
# at different times to increase availability. Caution should be used
# when using this feature, as a delayed standby will not be following
# the new primary and care must be taken that the new primary retains
# enough WAL for the standby to follow it.
# Please see the user's guide for more information.
standby.restart.delay=0
```

You can use the `application.name` property to provide the name of an application that will be copied to the `primary_conninfo` parameter before restarting an old primary node as a standby.

```
# During a switchover, recovery settings are copied from a standby
# to the original primary. If the application.name property is set,
# Failover Manager will replace the application_name portion of the
# primary_conninfo entry with this property value before starting
# the original primary database as a standby. If this property is
# not set, Failover Manager will remove the parameter value
# from primary_conninfo.
application.name=
```

Please note: You should set the `application.name` property on the primary and any promotable standby; in the event of a failover/switchover, the primary node could potentially become a standby node again.

Use the `restore.command` property to instruct Failover Manager to update the `restore_command` when a new primary is promoted. `%h` represents the address of the new primary; Failover Manager will replace `%h` with the address of the new primary. `%f` and `%p` are placeholders used by the server. If the property is left blank, Failover Manager will not update the `restore_command` values on the standbys after a promotion.

See the PostgreSQL documentation for more information about using a `restore_command`.

```
# If the restore_command on a standby restores directly from the
# primary node, use this property to have Failover Manager change
# the command when a new primary is promoted.
#
# Use the %h placeholder to represent the address of the new primary.
# During promotion it will be replaced with the address of the new
# primary.
#
# If not specified, failover manager will not change the
# restore_command value, if any, on standby nodes.
#
# Example:
# restore.command=scp <db service owner>@%h:/var/lib/edb/as12/data/
# ↪archive/%f %p
restore.command=
```

The database parameter `synchronous_standby_names` on the primary node specifies the names and count of the synchronous standby servers that will confirm receipt of data, to ensure that the primary nodes can accept write transactions. When `reconfigure.num.sync` property is set to true, Failover Manager will reduce the number of synchronous standby servers and reload the configuration of the primary node to reflect the current value.

```
# Reduce num_sync when the number of synchronous standbys drops
# below the value required by the primary database. If set to true,
# Failover Manager will reduce the number of standbys needed
# in the primary's synchronous_standby_names property and reload
# the primary configuration.
# Failover Manager will not reduce the number below 1, taking
# the primary out of synchronous replication, unless the
# reconfigure.sync.primary property is also set to true.
reconfigure.num.sync=false
```

Set the `reconfigure.sync.primary` property to true to take the primary database out of synchronous replication mode if the number of standby nodes drops below the level required. Set `reconfigure.sync.primary` to false to send a notification if the standby count drops, but not interrupt synchronous replication.

```
# Take the primary database out of synchronous replication mode when
# needed. If set to true, Failover Manager will clear the
# synchronous_standby_names configuration parameter on the primary
# if the number of synchronous standbys drops below the required
# level for the primary to accept writes.
# If set to false, Failover Manager will detect the situation but
# will only send a notification if the standby count drops below the
# required level.
#
# CAUTION: TAKING THE PRIMARY DATABASE OUT OF SYNCHRONOUS MODE MEANS
# THERE MAY ONLY BE ONE COPY OF DATA. DO NOT MAKE THIS CHANGE UNLESS
# YOU ARE SURE THIS IS OK.
reconfigure.sync.primary=false
```

Use the `minimum.standbys` property to specify the minimum number of standby nodes that will be retained on a cluster; if the standby count drops to the specified minimum, a replica node will not be promoted in the event of a failure of the primary node.

```
# Instead of setting specific standbys as being unavailable for
# promotion, this property can be used to set a minimum number
# of standbys that will not be promoted. Set to one, for
# example, promotion will not happen if it will drop the number
# of standbys below this value. This property must be the same on
# each node.
minimum.standbys=0
```

Use the `recovery.check.period` property to specify the number of seconds that Failover Manager will wait before checks to see if a database is out of recovery.

```
# Time in seconds between checks to see if a promoting database
# is out of recovery.
recovery.check.period=2
```

Use the `restart.connection.timeout` property to specify the number of seconds that Failover Manager will attempt to connect to a newly reconfigured primary or standby node while the database on that node prepares to accept connections.

```
# Time in seconds to keep trying to connect to a database after a
# start or restart command returns successfully but the database
# is not ready to accept connections yet (a rare occurrence). This
# applies to standby databases that are restarted when being
# reconfigured for a new primary, and to primary databases that
# are stopped and started as standbys during a switchover.
# This retry mechanism is unrelated to the auto.resume.period
# parameter.
restart.connection.timeout=60
```

Use the `auto.resume.period` property to specify the number of seconds (after a monitored database fails and an agent has assumed an idle state, or when starting in IDLE mode) during which an agent will attempt to resume monitoring that database.

```
# Period in seconds for IDLE agents to try to resume monitoring
# after a database failure or when starting in IDLE mode. Set to
# 0 for agents to not try to resume (in which case the
# 'efm resume <cluster>' command is used after bringing a
# database back up).
auto.resume.period=0
```

Failover Manager provides support for clusters that use a virtual IP. If your cluster uses a virtual IP, provide the host name or IP address in the `virtual.ip` property; specify the corresponding prefix in the `virtual.ip.prefix` property. If `virtual.ip` is left blank, virtual IP support is disabled.

Use the `virtual.ip.interface` property to provide the network interface used by the VIP.

The specified virtual IP address is assigned only to the primary node of the cluster. If you specify `virtual.ip.single=true`, the same VIP address will be used on the new primary in the event of a failover. Specify a value of `false` to provide a unique IP address for each node of the cluster.

For information about using a virtual IP address, see [Using Failover Manager with Virtual IP Addresses](#).

```
# These properties specify the IP and prefix length that will be
# remapped during failover. If you do not use a VIP as part of
# your failover solution, leave the virtual.ip property blank to
# disable Failover Manager support for VIP processing (assigning,
# releasing, testing reachability, etc).
#
# If you specify a VIP, the interface and prefix are required.
#
# If you specify a host name, it will be resolved to an IP address
# when acquiring or releasing the VIP. If the host name resolves
# to more than one IP address, there is no way to predict which
# address Failover Manager will use.
#
# By default, the virtual.ip and virtual.ip.prefix values must be
# the same across all agents. If you set virtual.ip.single to
# false, you can specify unique values for virtual.ip and
# virtual.ip.prefix on each node.
#
# If you are using an IPv4 address, the virtual.ip.interface value
# should not contain a secondary virtual ip id (do not include
# ":1", etc).
virtual.ip=
```

(continues on next page)

(continued from previous page)

```
virtual.ip.interface=
virtual.ip.prefix=
virtual.ip.single=true
```

Please note: : If a primary agent is started and the node does not currently have the VIP, the EFM agent will acquire it. Stopping a primary agent does not drop the VIP from the node.

Set the `check.vip.before.promotion` property to false to indicate that Failover Manager will not check to see if a VIP is in use before assigning it to a new primary in the event of a failure. Please note that this could result in multiple nodes broadcasting on the same VIP address; unless the primary node is isolated or can be shut down via another process, you should set this property to true.

```
# Whether to check if the VIP (when used) is still in use before
# promoting after a primary failure. Turning this off may allow
# the new primary to have the VIP even though another node is also
# broadcasting it. This should only be used in environments where
# it is known that the failed primary node will be isolated or
# shut down through other means.
check.vip.before.promotion=true
```

Use the following properties to provide paths to scripts that reconfigure your load balancer in the event of a switchover or primary failure scenario. The scripts will also be invoked in the event of a standby failure. If you are using these properties, they should be provided on every node of the cluster (primary, standby, and witness) to ensure that if a database node fails, another node will call the detach script with the failed node's address.

Provide a script name after the `script.load.balancer.attach` property to identify a script that will be invoked when a node should be attached to the load balancer. Use the `script.load.balancer.detach` property to specify the name of a script that will be invoked when a node should be detached from the load balancer. Include the `%h` placeholder to represent the IP address of the node that is being attached or removed from the cluster. Include the `%t` placeholder to instruct Failover Manager to include an `p` (for a primary node) or an `s` (for a standby node) in the string.

```
# Absolute path to load balancer scripts
# The attach script is called when a node should be attached to
# the load balancer, for example after a promotion. The detach
# script is called when a node should be removed, for example
# when a database has failed or is about to be stopped. Use %h to
# represent the IP/hostname of the node that is being
# attached/detached. Use %t to represent the type of node being
# attached or detached: the letter m will be passed in for primary
↳nodes
#and the letter s for standby nodes.
```

(continues on next page)

(continued from previous page)

```
#
# Example:
# script.load.balancer.attach=/somepath/attachscript %h %t
script.load.balancer.attach=
script.load.balancer.detach=
```

`script.fence` specifies the path to an optional user-supplied script that will be invoked during the promotion of a standby node to primary node.

```
# absolute path to fencing script run during promotion
#
# This is an optional user-supplied script that will be run
# during failover on the standby database node. If left blank,
# no action will be taken. If specified, EFM will execute this
# script before promoting the standby.
#
# Parameters can be passed into this script for the failed primary
# and new primary node addresses. Use %p for new primary and %f
# for failed primary. On a node that has just been promoted, %p
# should be the same as the node's efm binding address.
#
# Example:
# script.fence=/somepath/myscript %p %f
#
# NOTE: FAILOVER WILL NOT OCCUR IF THIS SCRIPT RETURNS A NON-ZERO EXIT
# CODE.
script.fence=
```

Use the `script.post.promotion` property to specify the path to an optional user-supplied script that will be invoked after a standby node has been promoted to primary.

```
# Absolute path to fencing script run after promotion
#
# This is an optional user-supplied script that will be run after
# failover on the standby node after it has been promoted and
# is no longer in recovery. The exit code from this script has
# no effect on failover manager, but will be included in a
# notification sent after the script executes.
#
# Parameters can be passed into this script for the failed primary
# and new primary node addresses. Use %p for new primary and %f
# for failed primary. On a node that has just been promoted, %p
# should be the same as the node's efm binding address.
#
# Example:
```

(continues on next page)

(continued from previous page)

```
# script.post.promotion=/somepath/myscript %f %p
script.post.promotion=
```

Use the `script.resumed` property to specify an optional path to a user-supplied script that will be invoked when an agent resumes monitoring of a database.

```
# Absolute path to resume script
#
# This script is run before an IDLE agent resumes
# monitoring its local database.
script.resumed=
```

Use the `script.db.failure` property to specify the complete path to an optional user-supplied script that Failover Manager will invoke if an agent detects that the database that it monitors has failed.

```
# Absolute path to script run after database failure
# This is an optional user-supplied script that will be run after
# an agent detects that its local database has failed.
script.db.failure=
```

Use the `script.primary.isolated` property to specify the complete path to an optional user-supplied script that Failover Manager will invoke if the agent monitoring the primary database detects that the primary is isolated from the majority of the Failover Manager cluster. This script is called immediately after the VIP is released (if a VIP is in use).

```
# Absolute path to script run on isolated primary
# This is an optional user-supplied script that will be run after
# a primary agent detects that it has been isolated from the
# majority of the efm cluster.
script.primary.isolated=
```

Use the `script.remote.pre.promotion` property to specify the path and name of a script that will be invoked on any agent nodes not involved in the promotion when a node is about to promote its database to primary.

Include the `%p` placeholder to identify the address of the new primary node.

```
# Absolute path to script invoked on non-promoting agent nodes
# before a promotion.
#
# This optional user-supplied script will be invoked on other
# agents when a node is about to promote its database. The exit
# code from this script has no effect on Failover Manager, but
# will be included in a notification sent after the script
# executes.
```

(continues on next page)

(continued from previous page)

```
#
# Pass a parameter (%p) with the script to identify the new
# primary node address.
#
# Example:
# script.remote.pre.promotion=/path_name/script_name %p
script.remote.pre.promotion=
```

Use the `script.remote.post.promotion` property to specify the path and name of a script that will be invoked on any non-primary nodes after a promotion occurs.

Include the `%p` placeholder to identify the address of the new primary node.

```
# Absolute path to script invoked on non-primary agent nodes
# after a promotion.
#
# This optional user-supplied script will be invoked on nodes
# (except the new primary) after a promotion occurs. The exit code
# from this script has no effect on Failover Manager, but will be
# included in a notification sent after the script executes.
#
# Pass a parameter (%p) with the script to identify the new
# primary node address.
#
# Example:
# script.remote.post.promotion=/path_name/script_name %p
script.remote.post.promotion=
```

Use the `script.custom.monitor` property to provide the name and location of an optional script that will be invoked on regular intervals (specified in seconds by the `custom.monitor.interval` property).

Use `custom.monitor.timeout` to specify the maximum time that the script will be allowed to run; if script execution does not complete within the time specified, Failover Manager will send a notification.

Set `custom.monitor.safe.mode` to `true` to instruct Failover Manager to report non-zero exit codes from the script, but not promote a standby as a result of an exit code.

```
# Absolute path to a custom monitoring script.
#
# Use script.custom.monitor to specify the location and name of
# an optional user-supplied script that will be invoked
# periodically to perform custom monitoring tasks. A non-zero
# exit value means that a check has failed; this will be treated
# as a database failure. On a primary node, script failure will
```

(continues on next page)

(continued from previous page)

```

# cause a promotion. On a standby node script failure will
# generate a notification and the agent will become IDLE.
#
# The custom.monitor.* properties are required if a custom
# monitoring script is specified:
#
# custom.monitor.interval is the time in seconds between executions
# of the script.
#
# custom.monitor.timeout is a timeout value in seconds for how
# long the script will be allowed to run. If script execution
# exceeds the specified time, the task will be stopped and a
# notification sent. Subsequent runs will continue.
#
# If custom.monitor.safe.mode is set to true, non-zero exit codes
# from the script will be reported but will not cause a promotion
# or be treated as a database failure. This allows testing of the
# script without affecting EFM.
#
script.custom.monitor=
custom.monitor.interval=
custom.monitor.timeout=
custom.monitor.safe.mode=

```

Use the `sudo.command` property to specify a command that will be invoked by Failover Manager when performing tasks that require extended permissions. Use this option to include command options that might be specific to your system authentication.

Use the `sudo.user.command` property to specify a command that will be invoked by Failover Manager when executing commands that will be performed by the database owner.

```

# Command to use in place of 'sudo' if desired when efm runs
# the efm_db_functions or efm_root_functions, or efm_address
# scripts.
# Sudo is used in the following ways by efm:
#
# sudo /usr/edb/efm-<version>/bin/efm_address <arguments>
# sudo /usr/edb/efm-<version>/bin/efm_root_functions <arguments>
# sudo -u <db service owner> /usr/edb/efm-<version>/bin/efm_db_
→functions <arguments>
#
# 'sudo' in the first two examples will be replaced by the value
# of the sudo.command property. 'sudo -u <db service owner>' will
# be replaced by the value of the sudo.user.command property.
# The '%u' field will be replaced with the db owner.
sudo.command=sudo

```

(continues on next page)

(continued from previous page)

```
sudo.user.command=sudo -u %u
```

Use the `lock.dir` property to specify an alternate location for the Failover Manager lock file; the file prevents Failover Manager from starting multiple (potentially orphaned) agents for a single cluster on the node.

```
# Specify the directory of lock file on the node. Failover
# Manager creates a file named <cluster>.lock at this location to
# avoid starting multiple agents for same cluster. If the path
# does not exist, Failover Manager will attempt to create it. If
# not specified defaults to '/var/lock/efm-<version>'
lock.dir=
```

Use the `log.dir` property to specify the location to which agent log files will be written; Failover Manager will attempt to create the directory if the directory does not exist.

```
# Specify the directory of agent logs on the node. If the path
# does not exist, Failover Manager will attempt to create it. If
# not specified defaults to '/var/log/efm-<version>'. (To store
# Failover Manager startup logs in a custom location, modify the
# path in the service script to point to an existing, writable
# directory.)
# If using a custom log directory, you must configure
# logrotate separately. Use 'man logrotate' for more information.
log.dir=
```

After enabling the UDP or TCP protocol on a Failover Manager host, you can enable logging to syslog. Use the `syslog.protocol` parameter to specify the protocol type (UDP or TCP) and the `syslog.port` parameter to specify the listener port of the syslog host. The `syslog.facility` value may be used as an identifier for the process that created the entry; the value must be between LOCAL0 and LOCAL7.

```
# Syslog information. The syslog service must be listening on
# the port for the given protocol, which can be UDP or TCP.
# The facilities supported are LOCAL0 through LOCAL7.
syslog.host=localhost
syslog.port=514
syslog.protocol=UDP
syslog.facility=LOCAL1
```

Use the `file.log.enabled` and `syslog.enabled` properties to specify the type of logging that you wish to implement. Set `file.log.enabled` to `true` to enable logging to a file; enable the UDP protocol or TCP protocol and set `syslog.enabled` to `true` to enable logging to syslog. You can enable logging to both a file and syslog.

```
# Which logging is enabled.
file.log.enabled=true
syslog.enabled=false
```

For more information about configuring syslog logging, see *Enabling syslog Log File Entries*.

Use the `jgroups.loglevel` and `efm.loglevel` parameters to specify the level of detail logged by Failover Manager. The default value is INFO. For more information about logging, see *Controlling Logging*.

```
# Logging levels for JGroups and EFM.
# Valid values are: TRACE, DEBUG, INFO, WARN, ERROR
# Default value: INFO
# It is not necessary to increase these values unless debugging a
# specific issue. If nodes are not discovering each other at
# startup, increasing the jgroups level to DEBUG will show
# information about the TCP connection attempts that may help
# diagnose the connection failures.
jgroups.loglevel=INFO
efm.loglevel=INFO
```

Use the `jvm.options` property to pass JVM-related configuration information. The default setting specifies the amount of memory that the Failover Manager agent will be allowed to use.

```
# Extra information that will be passed to the JVM when starting
# the agent.
jvm.options=-Xmx128m
```

Encrypting Your Database Password

Failover Manager requires you to encrypt your database password before including it in the cluster properties file. Use the *efm utility* (located in the `/usr/edb/efm-4.0/bin` directory) to encrypt the password. When encrypting a password, you can either pass the password on the command line when you invoke the utility, or use the `EFMPASS` environment variable.

To encrypt a password, use the command:

```
# efm encrypt <cluster_name> [ --from-env ]
```

Where `<cluster_name>` specifies the name of the Failover Manager cluster.

If you include the `--from-env` option, you must export the value you wish to encrypt before invoking the encryption utility. For example:

```
export EFMPASS=password
```

If you do not include the `--from-env` option, Failover Manager will prompt you to enter the database password twice before generating an encrypted password for you to place in your cluster properties file.

ter property file. When the utility shares the encrypted password, copy and paste the encrypted password into the cluster property files.

Please note: : Many Java vendors ship their version of Java with full-strength encryption included, but not enabled due to export restrictions. If you encounter an error that refers to an illegal key size when attempting to encrypt the database password, you should download and enable a Java Cryptography Extension (JCE) that provides an unlimited policy for your platform.

The following example demonstrates using the `encrypt` utility to encrypt a password for the `acctg` cluster:

```
# efm encrypt acctg
This utility will generate an encrypted password for you to
↳place in
  your EFM cluster property file:
/etc/edb/efm-4.0/acctg.properties
Please enter the password and hit enter:
Please enter the password again to confirm:
The encrypted password is: 516b36fb8031da17cfbc010f7d09359c
Please paste this into your acctg.properties file
db.password.encrypted=516b36fb8031da17cfbc010f7d09359c
```

Please note: : The utility will notify you if a properties file does not exist.

After receiving your encrypted password, paste the password into the properties file and start the Failover Manager service. If there is a problem with the encrypted password, the Failover Manager service will not start:

```
[witness@localhost ~]# service edb-efm-4.0 start
Starting local edb-efm-4.0 service: [FAILED]
```

If you receive this message when starting the Failover Manager service, please see the startup log (located in `/var/log/efm-4.0/startup-efm.log`) for more information.

If you are using RHEL/CeonOS 7.x or RHEL/CentOS 8.x, startup information is also available with the following command:

```
systemctl status edb-efm-4.0
```

To prevent a cluster from inadvertently connecting to the database of another cluster, the cluster name is incorporated into the encrypted password. If you modify the cluster name, you will need to re-encrypt the database password and update the cluster properties file.

Using the EFMPASS Environment Variable

The following example demonstrates using the `--from-env` environment variable when encrypting a password. Before invoking the `efm encrypt` command, set the value of `EFMPASS` to the password (`1safepassword`):

```
# export EFMPASS=1safepassword
```

Then, invoke `efm encrypt`, specifying the `--from-env` option:

```
# efm encrypt acctg --from-env  
# 7ceecd8965fa7a5c330eaa9e43696f83
```

The encrypted password (7ceecd8965fa7a5c330eaa9e43696f83) is returned as a text value; when using a script, you can check the exit code of the command to confirm that the command succeeded. A successful execution returns 0.

4.2 The Cluster Members File

Each node in a Failover Manager cluster has a cluster members file (by default, named `efm.nodes`) that contains a list of the current Failover Manager cluster members. When an agent starts, it uses the file to locate other cluster members. The Failover Manager installer creates a file template for the cluster members file named `efm.nodes.in` in the `/etc/edb/efm-4.0` directory.

After completing the Failover Manager installation, you must make a working copy of the template:

```
# cp /etc/edb/efm-4.0/efm.nodes.in /etc/edb/efm-4.0/efm.nodes
```

After copying the template file, change the owner of the file to `efm`:

```
chown efm:efm efm.nodes
```

By default, Failover Manager expects the cluster members file to be named `efm.nodes`. If you name the cluster members file something other than `efm.nodes`, you must modify the Failover Manager service script to instruct Failover Manager to use the new name.

The cluster members file on the first node started can be empty; this node will become the Membership Coordinator. On each subsequent node, the cluster member file must contain the address and port number of the Membership Coordinator. Each entry in the cluster members file must be listed in an address:port format, with multiple entries separated by white space.

The Membership Coordinator will update the contents of the `efm.nodes` file to match the current members of the cluster. As agents join or leave the cluster, the `efm.nodes` files on other agents are updated to reflect the current cluster membership. If you invoke the `efm stop-cluster` command, Failover Manager does not modify the file.

If the Membership Coordinator leaves the cluster, another node will assume the role. You can use the `efm cluster-status` command to find the address of the Membership Coordinator. If a node joins or leaves a cluster while an agent is down, you must manually ensure that the file includes at least the current Membership Coordinator.

If you know the IP addresses and ports of the nodes that will be joining the cluster, you can include the addresses in the cluster members file at any time. At startup, any addresses that do not identify cluster members will be ignored unless the `auto.allow.hosts` property (in the *cluster properties file*) is set to `true`.

If the `stable.nodes.file` property (located in the *cluster properties file*) is set to `true`, the Membership Coordinator will not update the `.nodes` file when cluster members join or leave the cluster; this behavior is most useful when the IP addresses of cluster members do not change often.

4.3 Extending Failover Manager Permissions

During the Failover Manager installation, the installer creates a user named `efm`. `efm` does not have sufficient privileges to perform management functions that are normally limited to the database owner or operating system superuser.

- When performing management functions requiring database superuser privileges, `efm` invokes the `efm_db_functions` script.
- When performing management functions requiring operating system superuser privileges, `efm` invokes the `efm_root_functions` script.
- When assigning or releasing a virtual IP address, `efm` invokes the `efm_address` script.

The `efm_db_functions` or `efm_root_functions` scripts perform management functions on behalf of the `efm` user.

The `sudoers` file contains entries that allow the user `efm` to control the Failover Manager service for clusters owned by `postgres` or `enterprisedb`. You can modify a copy of the `sudoers` file to grant permission to manage Postgres clusters owned by other users to `efm`.

The `efm-40` file is located in `/etc/sudoers.d`, and contains the following entries:

```
# Copyright EnterpriseDB Corporation, 2014-2020. All Rights Reserved.
#
# Do not edit this file. Changes to the file may be overwritten
# during an upgrade.
#
# This file assumes you are running your efm cluster as user
# 'efm'. If not, then you will need to copy this file.
# Allow user 'efm' to sudo efm_db_functions as either 'postgres'
# or 'enterprisedb'. If you run your db service under a
# non-default account, you will need to copy this file to grant
# the proper permissions and specify the account in your efm
# cluster properties file by changing the 'db.service.owner'
# property.

efm ALL=(postgres) NOPASSWD: /usr/edb/efm-4.0/bin/efm_db_
↳functions
efm ALL=(enterprisedb) NOPASSWD: /usr/edb/efm-4.0/bin/efm_db_
↳functions

# Allow user 'efm' to sudo efm_root_functions as 'root' to
# write/delete the PID file, validate the db.service.owner
# property, etc.
```

```
efm ALL=(ALL) NOPASSWD: /usr/edb/efm-4.0/bin/efm_root_functions
# Allow user 'efm' to sudo efm_address as root for VIP tasks.
efm ALL=(ALL) NOPASSWD: /usr/edb/efm-4.0/bin/efm_address
# relax tty requirement for user 'efm'
Defaults:efm !requiretty
```

If you are using Failover Manager to monitor clusters that are owned by users other than postgres or enterprisedb, make a copy of the efm-40 file, and modify the content to allow the user to access the efm_functions script to manage their clusters.

If an agent cannot start because of permission problems, make sure the default /etc/sudoers file contains the following line at the end of the file:

```
## Read drop-in files from /etc/sudoers.d (the # here does not #
mean a comment)

#includedir /etc/sudoers.d
```

4.3.1 Running Failover Manager without sudo

By default, Failover Manager uses `sudo` to securely manage access to system functionality. If you choose to configure Failover Manager to run without `sudo` access, please note that root access is still required to:

- install the Failover Manager RPM.
- perform Failover Manager setup tasks.

To run Failover Manager without `sudo`, you must select a database process owner that will have privileges to perform management functions on behalf of Failover Manager. The user could be the default database superuser (for example, `enterprisedb` or `postgres`) or another privileged user. After selecting the user:

1. Use the following command to add the user to the `efm` group:

```
usermod -a -G efm enterprisedb
```

This should allow the user to write to `/var/run/efm-4.0` and `/var/lock/efm-4.0`.

2. If you are reusing a cluster name, remove any previously created log files; the new user will not be able to write to log files created by the default (or other) owner.
3. Copy the cluster properties template file and the nodes template file:

```
su - enterprisedb
```

```
cp /etc/edb/efm-4.0/efm.properties.in <directory/cluster_name>.  
↳properties
```

```
cp /etc/edb/efm-4.0/efm.nodes.in <directory>/<cluster_name>.nodes
```

Then, modify the cluster properties file, providing the name of the user in the `db.service.owner` property. You must also ensure that the `db.service.name` property is blank; without `sudo`, you cannot run services without root access.

After modifying the configuration, the new user can control Failover Manager with the following command:

```
/usr/edb/efm-4.0/bin/runefm.sh start|stop <directory/cluster_  
↳name>.properties
```

Where `<directory/cluster_name.properties>` specifies the full path of the cluster properties file. Please note that the user must ensure that the full path to the properties file must be provided whenever the non-default user is controlling agents or using the `efm` script.

To allow the new user to manage Failover Manager as a service, you must provide a custom script or unit file.

Failover Manager uses a binary named `manage-vip` that resides in `/usr/edb/efm-4.0/bin/secure/` to perform VIP management operations without `sudo` privileges. This script uses

setuid to acquire with the privileges needed to manage Virtual IP addresses.

- This directory is only accessible to root and users in the `efm` group.
- The binary is only executable by root and the `efm` group.

For security reasons, we recommend against modifying the access privileges of the `/usr/edb/efm-4.0/bin/secure/` directory or the `manage-vip` script.

For more information about using Failover Manager without `sudo`, visit:

<https://www.enterprisedb.com/blog/running-edb-postgres-failover-manager-without-sudo>

4.4 Using Failover Manager with Virtual IP Addresses

Failover Manager uses the `efm_address` script to assign or release a virtual IP address.

Please note: Virtual IP addresses are not supported by many cloud providers. In those environments, another mechanism should be used (such as an Elastic IP Address on AWS), which can be changed when needed by a fencing or post-promotion script.

By default, the script resides in:

```
/usr/edb/efm-4.0/bin/efm_address
```

Use the following command variations to assign or release an IPv4 or IPv6 IP address.

To assign a virtual IPv4 IP address:

```
# efm_address add4 <interface_name> <IPv4_addr>/<prefix>
```

To assign a virtual IPv6 IP address:

```
# efm_address add6 <interface_name> <IPv6_addr>/<prefix>
```

To release a virtual address:

```
# efm_address del <interface_name> <IP_address/prefix>
```

Where:

`<interface_name>` matches the name specified in the `virtual.ip.interface` property in the cluster properties file.

`<IPv4_addr>` or `<IPv6_addr>` matches the value specified in the `virtual.ip` property in the cluster properties file.

`prefix` matches the value specified in the `virtual.ip.prefix` property in the cluster properties file.

For more information about properties that describe a virtual IP address, see *The Cluster Properties File*.

You must invoke the `efm_address` script as the root user. The `efm` user is created during the installation, and is granted privileges in the `sudoers` file to run the `efm_address` script. For more information about the `sudoers` file, see *Extending Failover Manager Permissions*.

Please note: : If a VIP address (or any address other than the `bind.address`) is assigned to a node, the operating system can choose the source address used when contacting the database. Be sure that you modify the `pg_hba.conf` file on all monitored databases to allow contact from all addresses within your replication scenario.

Testing the VIP

When using a virtual IP (VIP) address with Failover Manager, it is important to test the VIP functionality manually before starting failover manager. This will catch any network-related issues

before they cause a problem during an actual failover. The following steps test the actions that Failover Manager will take. The example uses the following property values:

```
virtual.ip=172.24.38.239
virtual.ip.interface=eth0
virtual.ip.prefix=24
ping.server.command=/bin/ping -q -c3 -w5
```

Please note: : The `virtual.ip.prefix` specifies the number of significant bits in the virtual Ip address.

When instructed to ping the VIP from a node, use the command defined by the `ping.server.command` property.

1. Ping the VIP from all nodes to confirm that the address is not already in use:

```
# /bin/ping -q -c3 -w5 172.24.38.239
PING 172.24.38.239 (172.24.38.239) 56(84) bytes of data.
--- 172.24.38.239 ping statistics ---
4 packets transmitted, 0 received, +3 errors, 100% packet loss,
time 3000ms
```

You should see 100% packet loss.

2. Run the `efm_address add4` command on the Primary node to assign the VIP and then confirm with `ip address`:

```
# efm_address add4 eth0 172.24.38.239/24
# ip address
<output truncated>
eth0 Link encap:Ethernet HWaddr 36:AA:A4:F4:1C:40
inet addr:172.24.38.239 Bcast:172.24.38.255
...
```

3. Ping the VIP from the other nodes to verify that they can reach the VIP:

```
# /bin/ping -q -c3 -w5 172.24.38.239
PING 172.24.38.239 (172.24.38.239) 56(84) bytes of data.
--- 172.24.38.239 ping statistics ---
3 packets transmitted, 3 received, 0% packet loss, time 1999ms
rtt min/avg/max/mdev = 0.023/0.025/0.029/0.006 ms
```

You should see no packet loss.

4. Use the `efm_address del` command to release the address on the primary node and confirm the node has been released with `ip address`:

```
# efm_address del eth0 172.24.38.239/24
# ip address
eth0 Link encap:Ethernet HWaddr 22:00:0A:89:02:8E
inet addr:10.137.2.142 Bcast:10.137.2.191
...
```

The output from this step should not show an eth0 interface

5. Repeat step 3, this time verifying that the Standby and Witness do not see the VIP in use:

```
# /bin/ping -q -c3 -w5 172.24.38.239
PING 172.24.38.239 (172.24.38.239) 56(84) bytes of data.
--- 172.24.38.239 ping statistics ---
4 packets transmitted, 0 received, +3 errors, 100% packet loss,
time 3000ms
```

You should see 100% packet loss. Repeat this step on all nodes.

6. Repeat step 2 on all Standby nodes to assign the VIP to every node. You can ping the VIP from any node to verify that it is in use.

```
# efm_address add4 eth0 172.24.38.239/24
# ip address
<output truncated>
eth0 Link encap:Ethernet HWaddr 36:AA:A4:F4:1C:40
inet addr:172.24.38.239 Bcast:172.24.38.255
...
```

After the test steps above, release the VIP from any non-Primary node before attempting to start Failover Manager.

Please note: : The network interface used for the VIP does not have to be the same interface used for the Failover Manager agent's `bind.address` value. The primary agent will drop the VIP as needed during a failover, and Failover Manager will verify that the VIP is no longer available before promoting a standby. A failure of the bind address network will lead to primary isolation and failover.

If the VIP uses a different interface, you may encounter a timing condition where the rest of the cluster checks for a reachable VIP before the primary agent has dropped it. In this case, EFM will retry the VIP check for the number of seconds specified in the `node.timeout` property to help ensure that a failover happens as expected.

Using Failover Manager

Failover Manager offers support for monitoring and failover of clusters with one or more Standby servers. You can add or remove nodes from the cluster as your demand for resources grows or shrinks.

If a primary node reboots, Failover Manager may detect the database is down on the Primary node and promote a Standby node to the role of Primary. If this happens, the Failover Manager agent on the (rebooted) Primary node will not get a chance to write the `recovery.conf` file (for server version 11 or prior) or `standby.signal` file (for server version 12 or later); the rebooted Primary node will return to the cluster as a second Primary node. To prevent this, start the Failover Manager agent before starting the database server. The agent will start in idle mode, and check to see if there is already a primary in the cluster. If there is a primary node, the agent will verify that a `recovery.conf` or `standby.signal` file exists, and the database will not start as a second primary.

5.1 Managing a Failover Manager Cluster

Once configured, a Failover Manager cluster requires no regular maintenance. The following sections provide information about performing the management tasks that may occasionally be required by a Failover Manager Cluster.

By default, *some of the efm commands* must be invoked by `efm` or an OS superuser; an administrator can selectively permit users to invoke these commands by adding the user to the `efm` group. The commands are:

- *efm allow-node*

- *efm disallow-node*
- *efm promote*
- *efm resume*
- *efm set-priority*
- *efm stop-cluster*
- *efm upgrade-conf*

5.1.1 Starting the Failover Manager Cluster

You can start the nodes of a Failover Manager cluster in any order.

To start the Failover Manager cluster on RHEL 6.x or CentOS 6.x, assume superuser privileges, and invoke the command:

```
service edb-efm-4.0 start
```

To start the Failover Manager cluster on RHEL/CentOS 7.x or RHEL/CentOS 8.x, assume superuser privileges, and invoke the command:

```
systemctl start edb-efm-4.0
```

If the cluster properties file for the node specifies that `is.witness` is `true`, the node will start as a Witness node.

If the node is not a dedicated Witness node, Failover Manager will connect to the local database and invoke the `pg_is_in_recovery()` function. If the server responds `false`, the agent assumes the node is a Primary node, and assigns a virtual IP address to the node (if applicable). If the server responds `true`, the Failover Manager agent assumes that the node is a Standby server. If the server does not respond, the agent will start in an idle state.

After joining the cluster, the Failover Manager agent checks the supplied database credentials to ensure that it can connect to all of the databases within the cluster. If the agent cannot connect, the agent will shut down.

If a new primary or standby node joins a cluster, all of the existing nodes will also confirm that they can connect to the database on the new node.

Note: If you are running `/var/lock` or `/var/run` on `tmpfs` (Temporary File System), make sure that the `systemd` service file for Failover Manager has a dependency on `systemd-tmpfiles-setup.service`.

5.1.2 Adding Nodes to a Cluster

You can add a node to a Failover Manager cluster at any time. When you add a node to a cluster, you must modify the cluster to allow the new node, and then tell the new node how to find the cluster. The following steps detail adding a node to a cluster:

1. Unless `auto.allow.hosts` is set to `true`, use the `efm allow-node` command, to add the IP address of the new node to the Failover Manager allowed node host list. When invoking the command, specify the cluster name and the IP address of the new node:

```
efm allow-node <cluster_name ip_address>
```

For more information about using the `efm allow-node` command or controlling a Failover Manager service, see *Using the EFM Utility*.

Install a Failover Manager agent and configure the cluster properties file on the new node. For more information about modifying the properties file, see *The Cluster Properties File*.

2. Configure the cluster members file on the new node, adding an entry for the Membership Coordinator. For more information about modifying the cluster members file, see *The Cluster Members File*.
3. Assume superuser privileges on the new node, and start the Failover Manager agent. To start the Failover Manager cluster on RHEL 6.x or CentOS 6.x, assume superuser privileges, and invoke the command:

```
service edb-efm-4.0 start
```

To start the Failover Manager cluster on RHEL/CentOS 7.x or RHEL/CentOS 8.x, assume superuser privileges, and invoke the command:

```
systemctl start edb-efm-4.0
```

When the new node joins the cluster, Failover Manager will send a notification to the administrator email provided in the `user.email` property, and/or will invoke the specified notification script.

Please note: : To be a useful Standby for the current node, the node must be a standby in the PostgreSQL Streaming Replication scenario.

5.1.3 Changing the Priority of a Standby

If your Failover Manager cluster includes more than one Standby server, you can use the `efm set-priority` command to influence the promotion priority of a Standby node. Invoke the command on any existing member of the Failover Manager cluster, and specify a priority value after the IP address of the member.

For example, the following command instructs Failover Manager that the `acctg` cluster member that is monitoring `10.0.1.9` is the primary Standby (1):

```
efm set-priority acctg 10.0.1.9 1
```

You can set the priority of a standby to 0 to make the standby non-promotable. Setting the priority of a standby to a value greater than 0 overrides a property value of `promotable=false`.

For example, if the `properties` file on node `10.0.1.10` includes a setting of `promotable=false` and you use `efm set-priority` to set the promotion priority of `10.0.1.10` to be the standby used in the event of a failover, the value designated by the `efm set-priority` command will override the value in the property file:

```
efm set-priority acctg 10.0.1.10 1
```

In the event of a failover, Failover Manager will first retrieve information from Postgres streaming replication to confirm which Standby node has the most recent data, and promote the node with the least chance of data loss. If two Standby nodes contain equally up-to-date data, the node with a higher user-specified priority value will be promoted to Primary unless `use.replay.tiebreaker` is set to `false`. To check the priority value of your Standby nodes, use the command:

```
efm cluster-status <cluster_name>
```

Please note: : The promotion priority may change if a node becomes isolated from the cluster, and later re-joins the cluster.

5.1.4 Promoting a Failover Manager Node

You can invoke `efm promote` on any node of a Failover Manager cluster to start a manual promotion of a Standby database to Primary database.

Manual promotion should only be performed during a maintenance window for your database cluster. If you do not have an up-to-date Standby database available, you will be prompted before continuing. To start a manual promotion, assume the identity of `efm` or the OS superuser, and invoke the command:

```
efm promote <cluster_name> [-switchover] [-sourcenode  
<address>] [-quiet] [-noscripts]
```

Where:

`<cluster_name>` is the name of the Failover Manager cluster.

Include the `-switchover` option to reconfigure the original Primary as a Standby. If you include the `-switchover` keyword, the cluster must include a primary node and at least one standby, and the nodes must be in sync.

Include the `-sourcenode` keyword to specify the node from which the recovery settings will be copied to the primary.

Include the `-quiet` keyword to suppress notifications during switchover.

Include the `-noscripts` keyword to prevent instruct Failover Manager to not invoke fencing and post-promotion scripts.

During switchover:

- For server versions 11 and prior, the `recovery.conf` file is copied from an existing standby to the primary node. For server version 12 and later, the `primary_conninfo` and `restore_command` parameters are copied and stored in memory.
- The primary database is stopped.
- If you are using a VIP, the address is released from the primary node.
- A standby is promoted to replace the primary node, and acquires the VIP.
- The address of the new primary node is added to the `recovery.conf` file or the `primary_conninfo` details are stored in memory.
- If the `application.name` property is set for this node, the `application_name` property will be added to the `recovery.conf` file or the `primary_conninfo` information will be stored in memory.
- If you are using server version 12 or later, the recovery settings that have been stored in memory are written to the `postgresql.auto.conf` file.
- The old primary is started; the agent will resume monitoring it as a standby.

During a manual promotion, the Primary agent releases the virtual IP address before creating a `recovery.conf` file in the directory specified by the `db.data.dir` property. The `recovery.conf` file is created on all server versions, and is used to prevent the old primary database from starting until the file is removed, preventing the node from starting as a second primary in the cluster.

The Primary agent remains running, and assumes a status of `Idle`.

The Standby agent confirms that the virtual IP address is no longer in use before pinging a well-known address to ensure that the agent is not isolated from the network. The Standby agent runs the fencing script and promotes the Standby database to Primary. The Standby agent then assigns the virtual IP address to the Standby node, and runs the post-promotion script (if applicable).

Please note that this command instructs the service to ignore the value specified in the `auto.failover` parameter in the cluster properties file.

To return a node to the role of primary, place the node first in the promotion list:

```
efm set-priority <cluster_name> <ip_address> <priority>
```

Then, perform a manual promotion:

```
efm promote <cluster_name> -switchover
```

For more information about the `efm` utility, see *Using the EFM Utility*.

5.1.5 Stopping a Failover Manager Agent

When you stop an agent, Failover Manager will remove the node's address from the cluster members list on all of the running nodes of the cluster, but will not remove the address from the Failover Manager Allowed node host list.

To stop the Failover Manager agent on RHEL 6.x or CentOS 6.x, assume superuser privileges, and invoke the command:

```
service edb-efm-4.0 stop
```

To stop the Failover Manager agent on RHEL/CentOS 7.x or RHEL/CentOS 8.x, assume superuser privileges, and invoke the command:

```
systemctl stop edb-efm-4.0
```

Until you invoke the `efm disallow-node` command (removing the node's address of the node from the Allowed node host list), you can use the `service edb-efm-4.0 start` command to restart the node at a later date without first running the `efm allow-node` command again.

Please note that stopping an agent does not signal the cluster that the agent has failed unless the *primary.shutdown.as.failure* property is set to `true`.

5.1.6 Stopping a Failover Manager Cluster

To stop a Failover Manager cluster, connect to any node of a Failover Manager cluster, assume the identity of `efm` or the OS superuser, and invoke the command:

```
efm stop-cluster <cluster_name>
```

The command will cause *all* Failover Manager agents to exit. Terminating the Failover Manager agents completely disables all failover functionality.

Please note: : When you invoke the `efm stop-cluster` command, all authorized node information is lost from the Allowed node host list.

5.1.7 Removing a Node from a Cluster

The `efm disallow-node` command removes the IP address of a node from the Failover Manager Allowed Node host list. Assume the identity of `efm` or the OS superuser on any existing node (that is currently part of the running cluster), and invoke the `efm disallow-node` command, specifying the cluster name and the IP address of the node:

```
efm disallow-node <cluster_name> <ip_address>
```

The `efm disallow-node` command will not stop a running agent; the service will continue to run on the node until you *stop the agent*. If the agent or cluster is subsequently stopped, the node

will not be allowed to rejoin the cluster, and will be removed from the failover priority list (and will be ineligible for promotion).

After invoking the `efm disallow-node` command, you must use the *efm allow-node* command to add the node to the cluster again.

5.2 Running Multiple Agents on a Single Node

You can monitor multiple database clusters that reside on the same host by running multiple Primary or Standby agents on that Failover Manager node. You may also run multiple Witness agents on a single node. To configure Failover Manager to monitor more than one database cluster, while ensuring that Failover Manager agents from different clusters do not interfere with each other, you must:

1. Create a cluster properties file for each member of each cluster that defines a unique set of properties and the role of the node within the cluster.
2. Create a cluster members file for each member of each cluster that lists the members of the cluster.
3. Customize the service script (on a RHEL or CentOS 6.x system) or the unit file (on a RHEL/CentOS 7.x or RHEL/CentOS 8.x system) for each cluster to specify the names of the cluster properties and the cluster members files.
4. Start the services for each cluster.

The examples that follow uses two database clusters (`acctg` and `sales`) running on the same node:

- Data for `acctg` resides in `/opt/pgdata1`; its server is monitoring port 5444.
- Data for `sales` resides in `/opt/pgdata2`; its server is monitoring port 5445.

To run a Failover Manager agent for both of these database clusters, use the `efm.properties.in` template to create two properties files. Each cluster properties file must have a unique name. For this example, we create `acctg.properties` and `sales.properties` to match the `acctg` and `sales` database clusters.

The following parameters must be unique in each cluster properties file:

```
admin.port
bind.address
db.port
db.data.dir
virtual.ip (if used)
virtual.ip.interface (if used)
```

Within each cluster properties file, the `db.port` parameter should specify a unique value for each cluster, while the `db.user` and `db.database` parameter may have the same value or a unique value. For example, the `acctg.properties` file may specify:

```
db.user=efm_user
db.password.encrypted=7c801b32a05c0c5cb2ad4ffbda5e8f9a
```



```
db.port=5444
db.database=acctg_db
```

While the `sales.properties` file may specify:

```
db.user=efm_user
db.password.encrypted=e003fea651a8b4a80fb248a22b36f334
db.port=5445
db.database=sales_db
```

Some parameters require special attention when setting up more than one Failover Manager cluster agent on the same node. If multiple agents reside on the same node, each port must be unique. Any two ports will work, but it may be easier to keep the information clear if using ports that are not too close to each other.

When creating the cluster properties file for each cluster, the `db.data.dir` parameters must also specify values that are unique for each respective database cluster.

The following parameters are used when assigning the virtual IP address to a node. If your Failover Manager cluster does not use a virtual IP address, leave these parameters blank.

```
virtual.ip
virtual.ip.interface
virtual.ip.prefix
```

This parameter value is determined by the virtual IP addresses being used and may or may not be the same for both `acctg.properties` and `sales.properties`.

After creating the `acctg.properties` and `sales.properties` files, create a service script or unit file for each cluster that points to the respective property files; this step is platform specific. If you are using RHEL 6.x or CentOS 6.x, see *RHEL 6.x or CentOS 6.x*; if you are using RHEL/CentOS 7.x or RHEL/CentOS 8.x, see *RHEL/CentOS 7.x or RHEL/CentOS 8.x*.

Please note: : If you are using a custom service script or unit file, you must manually update the file to reflect the new service name when you upgrade Failover Manager.

5.2.1 RHEL 6.x or CentOS 6.x

If you are using RHEL 6.x or CentOS 6.x, you should copy the `edb-efm-4.0` service script to new file with a name that is unique for each cluster. For example:

```
# cp /etc/init.d/edb-efm-4.0 /etc/init.d/efm-acctg
# cp /etc/init.d/edb-efm-4.0 /etc/init.d/efm-sales
```

Then edit the `CLUSTER` variable, modifying the cluster name from `efm` to `acctg` or `sales`.

After creating the service scripts, run:

```
# chkconfig efm-acctg on
# chkconfig efm-sales on
```

Then, use the new service scripts to start the agents. For example, you can start the `acctg` agent with the command:

```
# service efm-acctg start
```

5.2.2 RHEL/CentOS 7.x or RHEL/CentOS 8.x

If you are using RHEL/CentOS 7.x or RHEL/CentOS 8.x, you should copy the `edb-efm-4.0` unit file to new file with a name that is unique for each cluster. For example, if you have two clusters (named `acctg` and `sales`), the unit file names might be:

```
/usr/lib/systemd/system/efm-acctg.service
/usr/lib/systemd/system/efm-sales.service
```

Then, edit the `CLUSTER` variable within each unit file, changing the specified cluster name from `efm` to the new cluster name. For example, for a cluster named `acctg`, the value would specify:

```
Environment=CLUSTER=acctg
```

You must also update the value of the `PIDfile` parameter to specify the new cluster name. For example:

```
PIDfile=/var/run/efm-4.0/acctg.pid
```

After copying the service scripts, use the following commands to enable the services:

```
# systemctl enable efm-acctg.service
# systemctl enable efm-sales.service
```

Then, use the new service scripts to start the agents. For example, you can start the `acctg` agent with the command:

```
# systemctl start efm-acctg
```

For information about customizing a unit file, please visit:

http://fedoraproject.org/wiki/Systemd#How_do_I_customize_a_unit_file.2F_add_a_custom_unit_file.3F

Monitoring a Failover Manager Cluster

You can use either the Failover Manager `efm cluster-status` command or the PEM Client graphical interface to check the current status of a monitored node of a Failover Manager cluster.

6.1 Reviewing the Cluster Status Report

The `efm cluster-status cluster properties file` command returns a report that contains information about the status of the Failover Manager cluster. To invoke the command, enter:

```
# efm cluster-status <cluster_name>
```

The following status report is for a cluster named `edb` that has three nodes running:

Agent Type	Address	Agent	DB	VIP
Standby	172.19.10.2	UP	UP	192.168.225.190
Standby	172.19.12.163	UP	UP	192.168.225.190
Primary	172.19.14.9	UP	UP	192.168.225.190*

Allowed node host list:
172.19.14.9 172.19.12.163 172.19.10.2

Membership coordinator: 172.19.14.9

(continues on next page)

(continued from previous page)

```
Standby priority host list:
172.19.12.163 172.19.10.2
```

```
Promote Status:
```

DB Type	Address	WAL Received LSN	WAL Replayed LSN	Info
Primary	172.19.14.9		0/4000638	
Standby	172.19.12.163	0/4000638	0/4000638	
Standby	172.19.10.2	0/4000638	0/4000638	

```
Standby database(s) in sync with primary. It is safe to promote.
```

The cluster status section provides an overview of the status of the agents that reside on each node of the cluster:

Agent Type	Address	Agent	DB	VIP
Standby	172.19.10.2	UP	UP	192.168.225.190
Standby	172.19.12.163	UP	UP	192.168.225.190
Primary	172.19.14.9	UP	UP	192.168.225.190*

The asterisk (*) after the VIP address indicates that the address is available for connections. If a VIP address is not followed by an asterisk, the address has been associated with the node (in the properties file), but the address is not currently in use.

Failover Manager agents provide the information displayed in the Cluster Status section.

The Allowed node host list and Standby priority host list provide an easy way to tell which nodes are allowed to join the cluster, and the promotion order of the nodes. The IP address of the Membership coordinator is also displayed in the report:

```
Allowed node host list:
172.19.14.9 172.19.12.163 172.19.10.2
Membership coordinator: 172.19.14.9
Standby priority host list:
172.19.12.163 172.19.10.2
```

The Promote Status section of the report is the result of a direct query from the node on which you are invoking the cluster-status command to each database in the cluster; the query also returns the transaction log location of each database.

```
Promote Status:
```

DB Type	Address	WAL Received LSN	WAL Replayed LSN	Info
Primary	172.19.14.9		0/4000638	
Standby	172.19.12.163	0/4000638	0/4000638	
Standby	172.19.10.2	0/4000638	0/4000638	

If a database is down (or if the database has been restarted, but the resume command has not yet been invoked), the state of the agent that resides on that host will be Idle. If an agent is idle, the cluster status report will include a summary of the condition of the idle node. For example:

Agent Type	Address	Agent	DB	VIP
Idle	172.19.18.105	UP	UP	172.19.13.105

Exit Codes

The cluster status process returns an exit code that is based on the state of the cluster:

- An exit code of 0 indicates that all agents are running, and the databases on the Primary and Standby nodes are running and in sync.
- A non-zero exit code indicates that there is a problem. The following problems can trigger a non-zero exit code:

A database is down or unknown (or has an idle agent).

Failover Manager cannot decrypt the provided database password.

There is a problem contacting the databases to get WAL locations.

There is no Primary agent.

There are no Standby agents.

One or more Standby nodes are not in sync with the Primary.

6.2 Monitoring Streaming Replication with Postgres Enterprise Manager

If you use Postgres Enterprise Manager (PEM) to monitor your servers, you can configure the Streaming Replication Analysis dashboard (part of the PEM graphical interface) to display the state of a Primary or Standby node that is part of a Streaming Replication scenario.

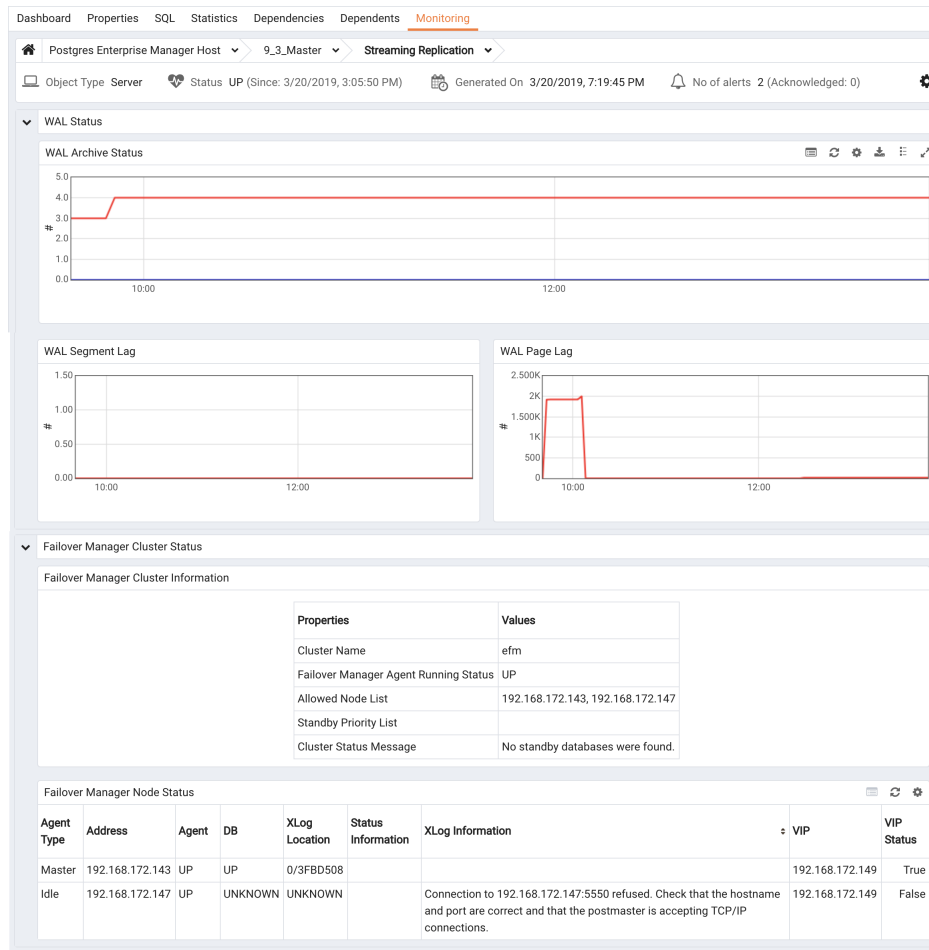


Fig. 1: *The Streaming Replication dashboard (Primary node)*

The Streaming Replication Analysis Dashboard displays statistical information about activity for any monitored server on which streaming replication is enabled. The dashboard header identifies the status of the monitored server (either Replication Primary or Replication Slave), and displays the date and time that the server was last started, the date and time that the page was last updated, and a current count of triggered alerts for the server.

When reviewing the dashboard for a Replication Slave (a Standby node), a label at the bottom of the dashboard confirms the status of the server.

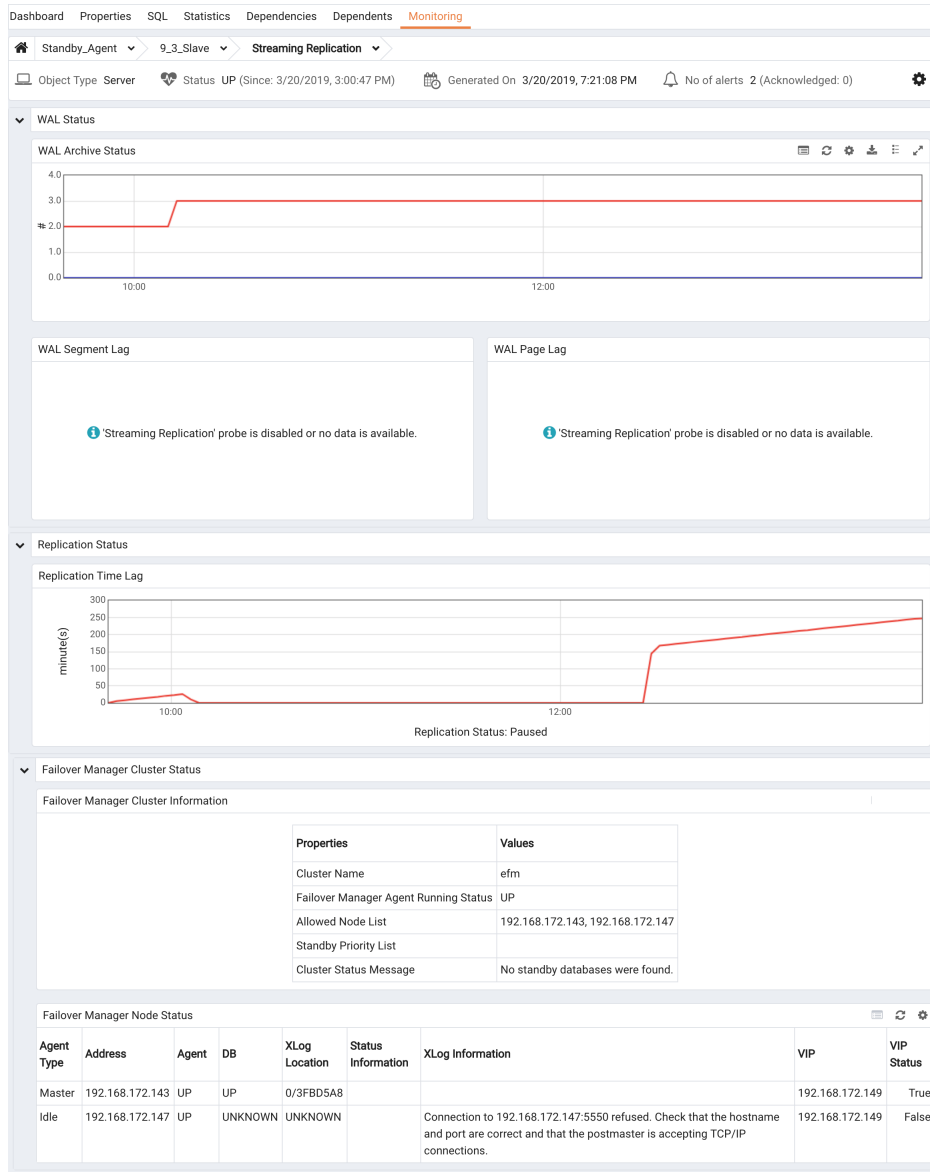


Fig. 2: The Streaming Replication dashboard (Standby node)

By default, the PEM replication probes that provide information for the Streaming Replication Analysis dashboard are disabled.

To view the Streaming Replication Analysis dashboard for the Primary node of a replication scenario, you must enable the following probes:

- Streaming Replication
- WAL Archive Status

To view the Streaming Replication Analysis dashboard for the Standby node of a replication scenario, you must enable the following probes:

- Streaming Replication Lag Time

For more information about PEM, please visit the EnterpriseDB website at:

<http://www.enterprisedb.com/products-services-training/products/postgres-enterprise-manager>

Using the efm Utility

Failover Manager provides the `efm` utility to assist with cluster management. The RPM installer adds the utility to the `/usr/edb/efm-4.0/bin` directory when you install Failover Manager.

```
efm allow-node <cluster_name>
```

Invoke the `efm allow-node` command to allow the specified node to join the cluster. When invoking the command, provide the name of the cluster and the IP address of the joining node.

This command must be invoked by `efm`, a member of the `efm` group, or root.

```
efm disallow-node <cluster_name> <ip_address>
```

Invoke the `efm disallow-node` command to remove the specified node from the allowed hosts list, and prevent the node from joining a cluster. Provide the name of the cluster and the IP address of the node when calling the `efm disallow-node` command. This command must be invoked by `efm`, a member of the `efm` group, or root.

```
efm cluster-status <cluster_name>
```

Invoke the `efm cluster-status` command to display the status of a Failover Manager cluster. For more information about the status report, see *Monitoring a Failover Manager Cluster*.

```
efm cluster-status-json <cluster_name>
```

Invoke the `efm cluster-status-json` command to display the status of a Failover Manager cluster in json format. While the format of the displayed infor-

mation is different than the display generated by the `efm cluster-status` command, the information source is the same.

The following example is generated by querying the status of a healthy cluster with two nodes:

```
{
  "nodes": {
    "172.16.144.176": {
      "type": "Witness",
      "agent": "UP",
      "db": "N\A",
      "vip": "",
      "vip_active": false
    },
    "172.16.144.177": {
      "type": "Primary",
      "agent": "UP",
      "db": "UP",
      "vip": "",
      "vip_active      :      false"
      "xlogReceive    :      0/14001478"
      "xlog           :      0/14001478"
      "xloginfo       :      "
    },
    "172.16.144.180": {
      "type": "Standby",
      "agent": "UP",
      "db": "UP",
      "vip": "",
      "vip_active      :      false"
      "xlogReceive    :      0/14001478"
      "xlog           :      0/14001478"
      "xloginfo       :      "
    }
  },
  "allowednodes": [
    "172.16.144.177",
    "172.16.144.160",
    "172.16.144.180",
    "172.16.144.176"
  ],
  "membershipcoordinator": "172.16.144.177",
  "failoverpriority": [
    "172.16.144.180"
  ],
  "minimumstandbys": 0,

```

(continues on next page)

(continued from previous page)

```
"missingnodes": [],  
"messages": []  
}
```

```
efm encrypt <cluster_name> [--from-env]
```

Invoke the `efm encrypt` command to encrypt the database password before include the password in the cluster properties file. Include the `--from-env` option to instruct Failover Manager to use the value specified in the `EFMPASS` environment variable, and execute without user input. For more information, see *Encrypting Your Database Password*.

```
efm promote cluster_name [-switchover [-sourcenode  
<address>] [-quiet] [-noscripts]
```

The `efm promote` command instructs Failover Manager to perform a manual failover of standby to primary.

Manual promotion should only be attempted if the status command reports that the cluster includes a Standby node that is up-to-date with the Primary. If there is no up-to-date Standby, Failover Manager will prompt you before continuing.

Include the `-switchover` clause to promote a standby node, and reconfigure a primary node as a standby node. Include the `-sourcenode` keyword, and specify a node address to indicate the node whose `recovery.conf` file will be copied to the old primary node (making it a standby). Include the `-quiet` keyword to suppress notifications during the switchover process. Include the `-noscripts` keyword to instruct Failover Manager to not invoke fencing or post-promotion scripts.

This command must be invoked by `efm`, a member of the `efm` group, or root.

Please note: This command instructs the service to ignore the value specified in the `auto.failover` parameter in the cluster properties file.

```
efm resume <cluster_name>
```

Invoke the `efm resume` command to resume monitoring a previously stopped database. This command must be invoked by `efm`, a member of the `efm` group, or root.

```
efm set-priority <cluster_name> <ip_address> <priority>
```

Invoke the `efm set-priority` command to assign a failover priority to a standby node. The value specifies the order in which the new node will be used in the event of a failover. This command must be invoked by `efm`, a member of the `efm` group, or root.

priority is an integer value of 1 to *n*, where *n* is the number of standby nodes in the list. Specify a value of 1 to indicate that the new node is the primary standby, and will

be the first node promoted in the event of a failover. A priority value of 0 instructs Failover Manager to not promote the standby.

```
efm stop-cluster <cluster_name>
```

Invoke the `efm stop-cluster` command to stop Failover Manager on all nodes. This command instructs Failover Manager to connect to each node on the cluster and instruct the existing members to shut down. The command has no effect on running databases, but when the command completes, there is no failover protection in place.

Please note: When you invoke the `efm stop-cluster` command, all authorized node information is removed from the Allowed node host list.

This command must be invoked by `efm`, a member of the `efm` group, or `root`.

```
efm upgrade-conf <cluster_name> [-source <directory>]
```

Invoke the `efm upgrade-conf` command to copy the configuration files from an existing Failover Manager installation, and add parameters required by a Failover Manager installation. Provide the name of the previous cluster when invoking the utility. This command must be invoked with root privileges.

If you are upgrading from a Failover Manager configuration that does not use `sudo`, include the `-source` flag and specify the name of the *directory* in which the configuration files reside when invoking `upgrade-conf`.

```
efm node-status-json <cluster_name>
```

Invoke the `efm node-status-json` command to display the status of a local node in json format. A successful execution of this command returns 0 as its exit code. In case of a database failure or an agent status becoming IDLE, the command returns 1 as exit code.

The following is an example output of the `efm node-status-json` command:

```
{
  "type": "Standby",
  "address": "172.16.144.130",
  "agent": "UP",
  "db": "UP",
  "vip": "",
  "vip_active": "false"
}
```

```
efm --help
```

Invoke the `efm --help` command to display online help for the Failover Manager utility commands.

Controlling the Failover Manager Service

Each node in a Failover Manager cluster hosts a Failover Manager agent that is controlled by a service script. By default, the service script expects to find:

- A configuration file named `efm.properties` that contains the properties used by the Failover Manager service. Each node of a replication scenario must contain a `properties` file that provides information about the node.
- A cluster members file named `efm.nodes` that contains a list of the cluster members. Each node of a replication scenario must contain a `cluster members list`.

Note that if you are running multiple clusters on a single node you will need to manually create configuration files with cluster-specific names and modify the service script for the corresponding clusters.

The commands that control the Failover Manager service are platform-specific.

8.1 Using the service Utility on RHEL 6.x and CentOS 6.x

On RHEL 6.x and CentOS 6.x, Failover Manager runs as a Linux service named (by default) `edb-efm-4.0` that is located in `/etc/init.d`. Each database cluster monitored by Failover Manager will run a copy of the service on each node of the replication cluster.

Use the following service commands to control a Failover Manager agent that resides on a RHEL 6.x or CentOS 6.x host:

```
service edb-efm-4.0 start
```

The `start` command starts the Failover Manager agent on the current node. The local Failover Manager agent monitors the local database and communicates with Failover Manager on the other nodes. You can start the nodes in a Failover Manager cluster in any order. This command must be invoked by root.

```
service edb-efm-4.0 stop
```

Stop the Failover Manager on the current node. This command must be invoked by root.

```
service edb-efm-4.0 status
```

The `status` command returns the status of the Failover Manager agent on which it is invoked. You can invoke the `status` command on any node to instruct Failover Manager to return status information. For example:

```
[witness@localhost ~]# service edb-efm-4.0 status
edb-efm-4.0 (pid 50836) is running...
```

```
service edb-efm-4.0 help
```

Display online help for the Failover Manager service script.

8.2 Using the systemctl Utility on RHEL/CentOS 7.x and RHEL/CentOS 8.x

On RHEL/CentOS 7.x and RHEL/CentOS 8.x, Failover Manager runs as a Linux service named (by default) `edb-efm-4.0.service` that is located in `/usr/lib/systemd/system`. Each database cluster monitored by Failover Manager will run a copy of the service on each node of the replication cluster.

Use the following `systemctl` commands to control a Failover Manager agent that resides on a RHEL/CentOS 7.x and RHEL/CentOS 8.x host:

```
systemctl start edb-efm-4.0
```

The `start` command starts the Failover Manager agent on the current node. The local Failover Manager agent monitors the local database and communicates with Failover Manager on the other nodes. You can start the nodes in a Failover Manager cluster in any order. This command must be invoked by root.

```
systemctl stop edb-efm-4.0
```

Stop the Failover Manager on the current node. This command must be invoked by root.

```
systemctl status edb-efm-4.0
```

The `status` command returns the status of the Failover Manager agent on which it is invoked. You can invoke the `status` command on any node to instruct Failover Manager to return status and server startup information.

```
[root@ONE ~]}> systemctl status edb-efm-4.0
edb-efm-4.0.service - EnterpriseDB Failover Manager 4.0
  Loaded: loaded (/usr/lib/systemd/system/edb-efm-4.0.service;
↳ disabled; vendor preset: disabled)
  Active: active (running) since Wed 2013-02-14 14:02:16 EST;
↳ 4s ago
  Process: 58125 ExecStart=/bin/bash -c /usr/edb/edb-efm-4.0/bin/
↳ runefm.sh start ${CLUSTER} (code=exited, status=0/SUCCESS)
 Main PID: 58180 (java)
  CGroup: /system.slice/edb-efm-4.0.service
          └─58180 /usr/lib/jvm/java-1.8.0-openjdk-1.8.0.161-0.
↳ b14.e17_4.x86_64/jre/bin/java -cp /usr/edb/edb-efm-4.0/lib/
↳ EFM-4.0.0.jar -Xmx128m -agentlib:jdwp=transport...
```

Controlling Logging

Failover Manager writes and stores one log file per agent and one startup log per agent in `/var/log/<cluster_name>-4.0` (where `<cluster_name>` specifies the name of the cluster).

You can control the level of detail written to the agent log by modifying the `jgroups.loglevel` and `efm.loglevel` parameters in the *cluster properties file*:

```
# Logging levels for JGroups and EFM.
# Valid values are: TRACE, DEBUG, INFO, WARN, ERROR
# Default value: INFO
# It is not necessary to increase these values unless debugging a
# specific issue. If nodes are not discovering each other at
# startup, increasing the jgroups level to DEBUG will show
# information about the TCP connection attempts that may help
# diagnose the connection failures.
jgroups.loglevel=INFO
efm.loglevel=INFO
```

The logging facilities use the Java logging library and logging levels. The log levels (in order from most logging output to least) are:

- TRACE
- DEBUG
- INFO
- WARN
- ERROR

For example, if you set the `efm.loglevel` parameter to `WARN`, Failover Manager will only log messages at the `WARN` level and above (`WARN` and `ERROR`).

By default, Failover Manager log files are rotated daily, compressed, and stored for a week. You can modify the file rotation schedule by changing settings in the log rotation file (`/etc/logrotate.d/efm-4.0`). For more information about modifying the log rotation schedule, consult the `logrotate` man page:

```
$ man logrotate
```

9.1 Enabling syslog Log File Entries

Failover Manager supports syslog logging. To implement syslog logging, you must configure syslog to allow UDP or TCP connections.

To allow a connection to syslog, edit the `/etc/rsyslog.conf` file and uncomment the protocol you wish to use. You must also ensure that the `UDPServerRun` or `TCPServerRun` entry associated with the protocol includes the port number to which log entries will be sent. For example, the following configuration file entries enable UDP connections to port 514:

```
# Provides UDP syslog reception
$ModLoad imudp
$UDPServerRun 514
```

The following configuration file entries enable TCP connections to port 514:

```
# Provides TCP syslog reception
$ModLoad imtcp
$InputTCPServerRun 514
```

After modifying the syslog configuration file, restart the `rsyslog` service to enable the connections:

```
systemctl restart rsyslog.service
```

After modifying the `rsyslog.conf` file on the Failover Manager host, you must modify the Failover Manager properties to enable logging. Use your choice of editor to *modify the properties file* (`/etc/edb/efm-4.0/efm.properties.in`) specifying the type of logging that you wish to implement:

```
# Which logging is enabled.
file.log.enabled=true
syslog.enabled=false
```

You must also *specify syslog details* for your system. Use the `syslog.protocol` parameter to specify the protocol type (UDP or TCP) and the `syslog.port` parameter to specify the listener port of the syslog host. The `syslog.facility` value may be used as an identifier for the process that created the entry; the value must be between `LOCAL0` and `LOCAL7`.

```
# Syslog information. The syslog service must be listening # on the
# port for the given protocol, which can be UDP or
# TCP. The facilities supported are LOCAL0 through LOCAL7.
# syslog.host=localhost
syslog.port=514
syslog.protocol=UDP
syslog.facility=LOCAL1
```

For more information about syslog, please see the syslog man page:

syslog man

CHAPTER 10

Notifications

Failover Manager will send e-mail notifications and/or invoke a notification script when a notable event occurs that affects the cluster. If you have configured Failover Manager to send an email notification, you must have an SMTP server running on port 25 on each node of the cluster. Use the following parameters to configure notification behavior for Failover Manager:

```
user.email
script.notification
from.email
```

For more information about editing the configuration properties, see *Specifying Cluster Properties*.

The body of the notification contains details about the event that triggered the notification, and about the current state of the cluster. For example:

```
EFM node: 10.0.1.11
Cluster name: acctg
Database name: postgres
VIP: ip_address (Active|Inactive)
Database health is not being monitored.
```

The VIP field displays the IP address and state of the virtual IP if implemented for the node.

Failover Manager assigns a severity level to each notification. The following levels indicate increasing levels of attention required:

- INFO indicates an informational message about the agent and does not require any manual intervention (for example, Failover Manager has started or stopped). See *List of INFO level notifications*

- **WARNING** indicates that an event has happened that requires the administrator to check on the system (for example, failover has occurred). See *List of WARNING level notifications*
- **SEVERE** indicates that a serious event has happened and requires the immediate attention of the administrator (for example, failover was attempted, but was unable to complete). See *List of SEVERE level notifications*

The severity level designates the urgency of the notification. A notification with a severity level of **SEVERE** requires user attention immediately, while a notification with a severity level of **INFO** will call your attention to operational information about your cluster that does not require user action. Notification severity levels are not related to logging levels; all notifications are sent regardless of the log level detail specified in the configuration file.

You can use the *notification.level* property to specify the minimum severity level that will trigger a notification.

Please note: : In addition to sending notices to the administrative email address, all notifications are recorded in the cluster log file (`/var/log/efm-4.0/<cluster_name>.log`).

The conditions listed in the table below will trigger an INFO level notification:

Subject	Description
Executed fencing script	Executed fencing script <i>script_name</i> Results: <i>script_results</i>
Executed post-promotion script	Executed post-promotion script <i>script_name</i> Results: <i>script_results</i>
Executed remote pre-promotion script	Executed remote pre-promotion script <i>script_name</i> Results: <i>script_results</i>
Executed remote post-promotion script	Executed remote post-promotion script <i>script_name</i> Results: <i>script_results</i>
Executed post-database failure script	Executed post-database failure script <i>script_name</i> Results: <i>script_results</i>
Executed primary isolation script	Executed primary isolation script <i>script_name</i> Results: <i>script_results</i>
Witness agent running on <i>node_address</i> for cluster <i>cluster_name</i>	Witness agent is running.
Primary agent running on <i>node_address</i> for cluster <i>cluster_name</i>	Primary agent is running and database health is being monitored.
Standby agent running on <i>node_address</i> for cluster <i>cluster_name</i>	Standby agent is running and database health is being monitored.
Idle agent running on <i>node_address</i> for cluster <i>cluster_name</i>	Idle agent is running. After starting the local database, the agent can be resumed.
Assigning VIP to node <i>node_address</i>	Assigning VIP <i>VIP_address</i> to node <i>node_address</i> Results: <i>script_results</i>
Releasing VIP from node <i>node_address</i>	Releasing VIP <i>VIP_address</i> from node <i>node_address</i> Results: <i>script_results</i>
Starting auto resume check for cluster <i>cluster_name</i>	The agent on this node will check every <i>auto.resume.period</i> seconds to see if it can resume monitoring the failed database. The cluster should be checked during this time and the agent stopped if the database will not be started again. See the agent log for more details.
Executed agent resumed script	Executed agent resumed script <i>script_name</i> Results: <i>script_results</i>
WAL logs backed up during promotion	When reconfiguring this standby to follow the new primary, the <i>pg_xlog</i> or <i>pg_wal</i> contents were backed up in the <i>pgdata</i> directory. This backup should be removed when convenient to free up disk space.

The conditions listed in the table below will trigger a *WARNING* level notification:

Subject	Description
Witness agent exited on <i>node_address</i> for cluster <i>cluster_name</i>	Witness agent has exited.
Primary agent exited on <i>node_address</i> for cluster <i>cluster_name</i>	Database health is not being monitored.
Cluster <i>cluster_name</i> notified that primary node has left	Failover is disabled for the cluster until the primary agent is restarted.
Standby agent exited on <i>node_address</i> for cluster <i>cluster_name</i>	Database health is not being monitored.
Agent exited during promotion on <i>node_address</i> for cluster <i>cluster_name</i>	Database health is not being monitored.
Agent exited on <i>node_address</i> for cluster <i>cluster_name</i>	The agent has exited. This is generated by an agent in the Idle state.
Agent exited for cluster <i>cluster_name</i>	The agent has exited. This notification is usually generated during startup when an agent exits before startup has completed.
Virtual IP address assigned to non-primary node	The virtual IP address appears to be assigned to a non-primary node. To avoid any conflicts, Failover Manager will release the VIP. You should confirm that the VIP is assigned to your primary node and manually reassign the address if it is not.
Virtual IP address not assigned to primary node.	The virtual IP address appears to not be assigned to a primary node. EDB Postgres Failover Manager will attempt to reacquire the VIP.
No standby agent in cluster for cluster <i>cluster_name</i>	The standbys on <i>cluster_name</i> have left the cluster.
Standby agent failed for cluster <i>cluster_name</i>	A standby agent on <i>cluster_name</i> has left the cluster, but the coordinator has detected that the standby database is still running.
Standby database failed for cluster <i>cluster_name</i>	A standby agent has signaled that its database has failed. The other nodes also cannot reach the standby database.
Standby agent cannot reach database for cluster <i>cluster_name</i>	A standby agent has signaled database failure, but the other nodes have detected that the standby database is still running.
Cluster <i>cluster_name</i> has dropped below three nodes	At least three nodes are required for full failover protection. Please add witness or agent node to the cluster.

continues on next page

Table 1 – continued from previous page

Subject	Description
Subset of cluster <i>cluster_name</i> disconnected from primary	This node is no longer connected to the majority of the cluster <i>cluster_name</i> . Because this node is part of a subset of the cluster, failover will not be attempted. Current nodes that are visible are: <i>node_address</i>
Promotion has started on cluster <i>cluster_name</i> .	The promotion of a standby has started on cluster <i>cluster_name</i> .
Witness failure for cluster <i>cluster_name</i>	Witness running at <i>node_address</i> has left the cluster.
Idle agent failure for cluster <i>cluster_name</i> .	Idle agent running at <i>node_address</i> has left the cluster.
One or more nodes isolated from network for cluster <i>cluster_name</i>	This node appears to be isolated from the network. Other members seen in the cluster are: <i>node_name</i>
Node no longer isolated from network for cluster <i>cluster_name</i> .	This node is no longer isolated from the network.
Standby agent tried to promote, but primary DB is still running	The standby EFM agent tried to promote itself, but detected that the primary DB is still running on <i>node_address</i> . This usually indicates that the primary EFM agent has exited. Failover has NOT occurred.
Standby agent started to promote, but primary has rejoined.	The standby EFM agent started to promote itself, but found that a primary agent has rejoined the cluster. Failover has NOT occurred.
Standby agent tried to promote, but could not verify primary DB	The standby EFM agent tried to promote itself, but could not detect whether or not the primary DB is still running on <i>node_address</i> . Failover has NOT occurred.
Standby agent tried to promote, but VIP appears to still be assigned	The standby EFM agent tried to promote itself, but could not because the virtual IP address (<i>VIP_address</i>) appears to still be assigned to another node. Promoting under these circumstances could cause data corruption. Failover has NOT occurred.
Standby agent tried to promote, but appears to be orphaned	The standby EFM agent tried to promote itself, but could not because the well-known server (<i>server_address</i>) could not be reached. This usually indicates a network issue that has separated the standby agent from the other agents. Failover has NOT occurred.
Potential manual failover required on cluster <i>cluster_name</i> .	A potential failover situation was detected for cluster <i>cluster_name</i> . Automatic failover has been disabled for this cluster, so manual intervention is required.
Failover has completed on cluster <i>cluster_name</i>	Failover has completed on cluster <i>cluster_name</i> .

continues on next page

Table 1 – continued from previous page

Subject	Description
Lock file for cluster <i>cluster_name</i> has been removed	The lock file for cluster <i>cluster_name</i> has been removed from: <i>path_name</i> on node <i>node_address</i> . This lock prevents multiple agents from monitoring the same cluster on the same node. Please restore this file to prevent accidentally starting another agent for cluster.
A recovery file for cluster <i>cluster_name</i> has been found on primary node	A recovery file for cluster <i>cluster_name</i> has been found at: <i>path_name</i> on primary node <i>node_address</i> . This may be problematic should you attempt to restart the DB on this node.
recovery_target_timeline is not set to latest in recovery settings	The recovery_target_timeline parameter is not set to latest in the recovery settings. The standby server will not be able to follow a timeline change that occurs when a new primary is promoted.
Promotion has not occurred for cluster <i>cluster_name</i>	A promotion was attempted but there is already a node being promoted: <i>ip_address</i> .
Standby not reconfigured after failover in cluster <i>cluster_name</i>	The auto.reconfigure property has been set to false for this node. The node has not been reconfigured to follow the new primary node after a failover.
Could not resume replay for cluster <i>cluster_name</i>	Could not resume replay for standby being promoted. Manual intervention may be required. Error: <i>error_description</i> This error is returned if the server encounters an error when invoking replay during the promotion of a standby.
Could not resume replay for standby <i>standby_id</i> .	Could not resume replay for standby. Manual intervention may be required. Error: <i>error_message</i> .
Possible problem with database timeout values	Your remote.timeout value (<i>value</i>) is higher than your local.timeout value (<i>value</i>). If the local database takes too long to respond, the local agent could assume that the database has failed though other agents can connect. While this will not cause a failover, it could force the local agent to stop monitoring, leaving you without failover protection.
No standbys available for promotion in cluster <i>cluster_name</i>	The current number of standby nodes in the cluster has dropped to the minimum number: <i>number</i> . There cannot be a failover unless another standby node(s) is added or made promotable.
No promotable standby for cluster <i>cluster_name</i>	The current failover priority list in the cluster is empty. You have removed the only promotable standby for the cluster <i>cluster_name</i> . There cannot be a failover unless another promotable standby node(s) is added or made promotable by adding to failover priority list.

continues on next page

Table 1 – continued from previous page

Subject	Description
Synchronous replication has been re-configured for cluster <i>cluster_name</i>	The number of synchronous standby nodes in the cluster has dropped below <i>number</i> . The synchronous standby names on primary has been reconfigured to: <i>new synchronous_standby_names value</i> .
Synchronous replication has been disabled for cluster <i>cluster_name</i> .	The number of synchronous standby nodes in the cluster has dropped below <i>count</i> . The primary has been taken out of synchronous replication mode.
Could not reload database configuration.	Could not reload database configuration. Manual intervention is required. Error: <i>error_message</i> .
Custom monitor timeout for cluster <i>cluster_name</i>	The following custom monitoring script has timed out: <i>script_name</i>
Custom monitor ‘safe mode’ failure for cluster <i>cluster_name</i>	The following custom monitor script has failed, but is being run in “safe mode”: <i>script_name</i> . Output: <i>script_results</i>
<i>primary.shutdown.as.failure</i> set to true for primary node	The <i>primary.shutdown.as.failure</i> property has been set to true for this cluster. Stopping the primary agent without stopping the entire cluster will be treated by the rest of the cluster as an immediate primary agent failure. If maintenance is required on the primary database, shut down the primary agent and wait for a notification from the remaining nodes that failover will not happen.
Primary cannot ping local database for cluster <i>cluster_name</i>	The primary agent can no longer reach the local database running at <i>node_address</i> . Other nodes are able to access the database remotely, so the primary will become IDLE and attempt to resume monitoring the database.

The conditions listed in the table below will trigger a *SEVERE* notification:

Subject	Description
Standby database restarted but EFM cannot connect	The start or restart command for the database ran successfully but the database is not accepting connections. EFM will keep trying to connect for up to <i>restart.connection.timeout</i> seconds.
Unable to connect to DB on <i>node_address</i>	The maximum connections limit has been reached.
Unable to connect to DB on <i>node_address</i>	Invalid password for db.user= <i>user_name</i> .
Unable to connect to DB on <i>node_address</i>	Invalid authorization specification.
Primary cannot resume monitoring local database for cluster <i>cluster_name</i>	The primary agent can no longer reach the local database running at <i>node_address</i> . Other nodes are able to access the database remotely, so the primary will not release the VIP and/or create a <i>recovery.conf</i> file. The primary agent will remain IDLE until the resume command is run to resume monitoring the database.
Fencing script error	Fencing script <i>script_name</i> failed to execute successfully. Exit Value: <i>exit_code</i> Results: <i>script_results</i> Failover has NOT occurred.
Post-promotion script failed	Post-promotion script <i>script_name</i> failed to execute successfully. Exit Value: <i>exit_code</i> Results: <i>script_results</i>
Remote post-promotion script failed	Remote post-promotion script <i>script_name</i> failed to execute successfully Exit Value: <i>exit_code</i> Results: <i>script_results</i> Node: <i>node_address</i>
Remote pre-promotion script failed	Remote pre-promotion script <i>script_name</i> failed to execute successfully Exit Value: <i>exit_code</i> Results: <i>script_results</i> Node: <i>node_address</i>
Post-database failure script error	Post-database failure script <i>script_name</i> failed to execute successfully. Exit Value: <i>exit_code</i> Results: <i>script_results</i>
Agent resumed script error	Agent resumed script <i>script_name</i> failed to execute successfully. Results: <i>script_results</i>
Primary isolation script failed	Primary isolation script <i>script_name</i> failed to execute successfully. Exit Value: <i>exit_code</i> Results: <i>script_results</i>
Could not promote standby	The promote command failed on node. Could not promote standby. Error details: <i>error_details</i>

continues on next page

Table 2 – continued from previous page

Subject	Description
Error creating recovery.conf file on <i>node_address</i> for cluster <i>cluster_name</i>	There was an error creating the recovery.conf file on primary node <i>node_address</i> during promotion. Promotion has continued, but requires manual intervention to ensure that the old primary node can not be restarted. Error details: <i>message_details</i>
An unexpected error has occurred for cluster <i>cluster_name</i>	An unexpected error has occurred on this node. Please check the agent log for more information. Error: <i>error_details</i>
Primary database being fenced off for cluster <i>cluster_name</i>	The primary database has been isolated from the majority of the cluster. The cluster is telling the primary agent at <i>ip_address</i> to fence off the primary database to prevent two primaries when the rest of the failover manager cluster promotes a standby.
Isolated primary database shutdown.	The isolated primary database has been shutdown by failover manager.
Primary database being fenced off for cluster <i>cluster_name</i>	The primary database has been isolated from the majority of the cluster. Before the primary could finish detecting isolation, a standby was promoted and has rejoined this node in the cluster. This node is isolating itself to avoid more than one primary database.
Could not assign VIP to node <i>node_address</i>	Failover manager could not assign the VIP address for some reason.
<i>primary_or_standby</i> database failure for cluster <i>cluster_name</i>	The database has failed on the specified node.
Agent is timing out for cluster <i>cluster_name</i>	This agent has timed out trying to reach the local database. After the timeout, the agent could successfully ping the database and has resumed monitoring. However, the node should be checked to make sure it is performing normally to prevent a possible database or agent failure.
Resume timed out for cluster <i>cluster_name</i>	This agent could not resume monitoring after reconfiguring and restarting the local database. See agent log for details.
Internal state mismatch for cluster <i>cluster_name</i>	The failover manager cluster's internal state did not match the actual state of the cluster members. This is rare and can be caused by a timing issue of nodes joining the cluster and/or changing their state. The problem should be resolved, but you should check the cluster status as well to verify. Details of the mismatch can be found in the agent log file.

continues on next page

Table 2 – continued from previous page

Subject	Description
Failover has not occurred	An agent has detected that the primary database is no longer available in cluster <i>cluster_name</i> , but there are no standby nodes available for failover.
Database in wrong state on <i>node_address</i>	The standby agent has detected that the local database is no longer in recovery. The agent will now become idle. Manual intervention is required.
Database in wrong state on <i>node_address</i>	The primary agent has detected that the local database is in recovery. The agent will now become idle. Manual intervention is required.
Database connection failure for cluster <i>cluster_name</i>	This node is unable to connect to the database running on: <i>node_address</i> Until this is fixed, failover may not work properly because this node will not be able to check if the database is running or not.
Standby custom monitor failure for cluster <i>cluster_name</i>	The following custom monitor script has failed on a standby node. The agent will stop monitoring the local database. Script location: <i>script_name</i> Script output: <i>script_results</i>
Primary custom monitor failure for cluster <i>cluster_name</i>	The following custom monitor script has failed on a primary node. EFM will attempt to promote a standby. Script location: <i>script_name</i> Script output: <i>script_results</i>
Loopback address set for <i>ping.server.ip</i>	Loopback address is set for <i>ping.server.ip</i> property. This setting can interfere with the network isolation detection and hence it should be changed.
Load balancer attach script error	Load balancer attach script <i>script_name</i> failed to execute successfully. Exit Value: <i>exit_code</i> Results: <i>script_results</i>
Load balancer detach script error	Load balancer detach script <i>script_name</i> failed to execute successfully. Exit Value: <i>exit_code</i> Results: <i>script_results</i>
Not enough synchronous standbys available in cluster <i>cluster_name</i> .	The number of synchronous standby nodes in the cluster has dropped to <i>count</i> . All write queries on the primary will be blocked until enough synchronous standby nodes are added.

Supported Failover and Failure Scenarios

Failover Manager monitors a cluster for failures that may or may not result in failover.

Failover Manager supports a very specific and limited set of failover scenarios. Failover can occur:

- if the Primary database crashes or is shutdown.
- if the node hosting the Primary database crashes or becomes unreachable.

Failover Manager makes every attempt to verify the accuracy of these conditions. If agents cannot confirm that the Primary database or node has failed, Failover Manager will not perform any failover actions on the cluster.

Failover Manager also supports a *no auto-failover* mode for situations where you want Failover Manager to monitor and detect failover conditions, but not perform an automatic failover to a Standby. In this mode, a notification is sent to the administrator when failover conditions are met. To disable automatic failover, modify the cluster properties file, setting the *auto.failover* parameter to false.

Failover Manager will alert an administrator to situations that require administrator intervention, but that do not merit promoting a Standby database to Primary.

11.1 Primary Database is Down

If the agent running on the Primary database node detects a failure of the Primary database, Failover Manager begins the process of confirming the failure.

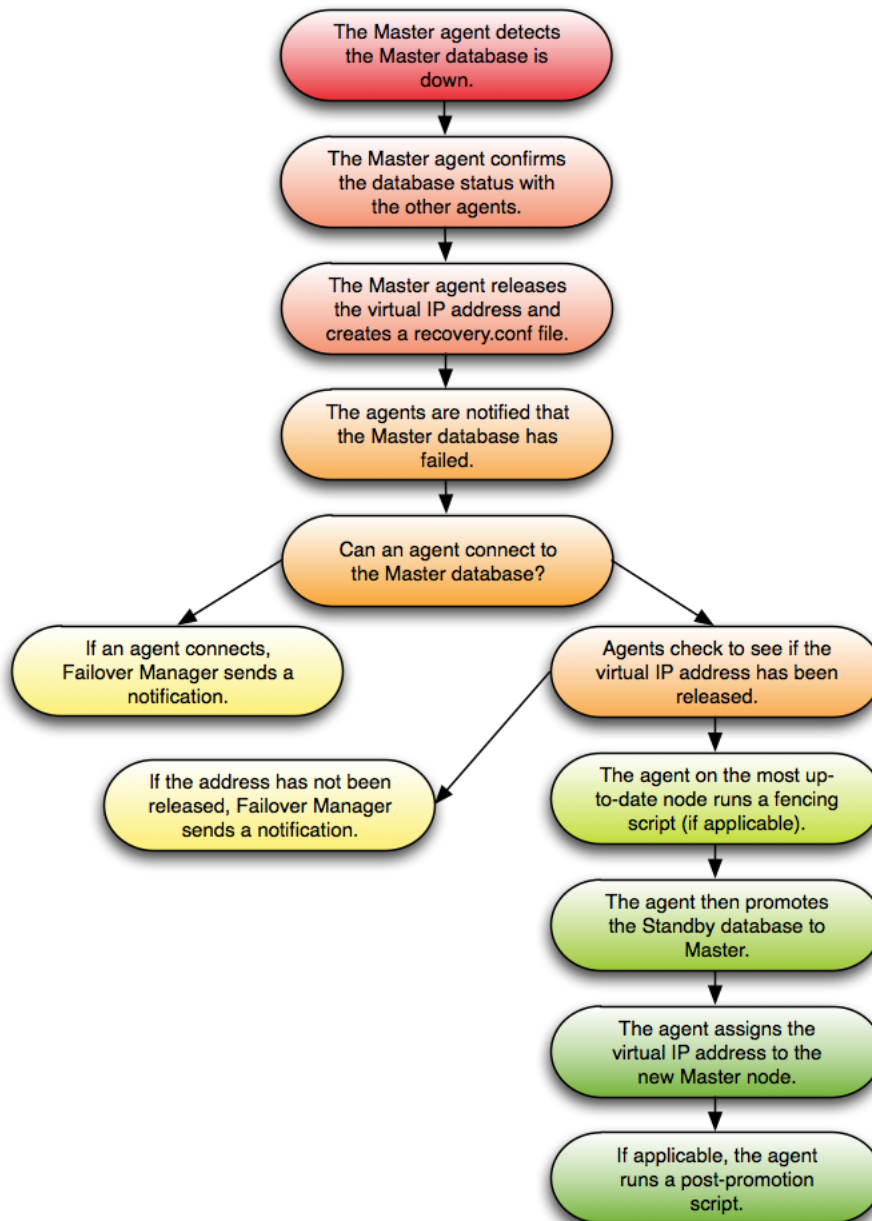


Fig. 1: *Confirming the Failure of the Primary Database.*

If the agent on the Primary node detects that the Primary database has failed, all agents attempt to connect directly to the Primary database. If an agent can connect to the database, Failover Manager

sends a notification about the state of the Primary node. If no agent can connect, the Primary agent declares database failure and releases the VIP (if applicable).

If no agent can reach the virtual IP address or the database server, Failover Manager starts the failover process. The Standby agent on the most up-to-date node runs a fencing script (if applicable), promotes the Standby database to Primary database, and assigns the virtual IP address to the Standby node. Any additional Standby nodes are configured to replicate from the new primary unless `auto.reconfigure` is set to false. If applicable, the agent runs a post-promotion script.

Returning the Node to the Cluster

To recover from this scenario without restarting the entire cluster, you should:

1. Restart the database on the original Primary node as a Standby database.
2. Invoke the `efm resume` command on the original Primary node.

Returning the Node to the Role of Primary

After returning the node to the cluster as a Standby, you can easily return the node to the role of Primary:

1. If the cluster has more than one Standby node, use the `efm set-priority` command to set the node's failover priority to 1.
2. Invoke the `efm promote -switchover` command to promote the node to its original role of Primary node.

11.2 Standby Database is Down

If a Standby agent detects a failure of its database, the agent notifies the other agents; the other agents confirm the state of the database.

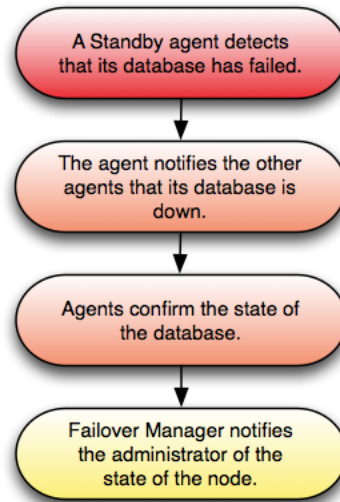


Fig. 2: *Confirming the failure of a Standby Database.*

After returning the Standby database to a healthy state, invoke the `efm resume` command to return the Standby to the cluster.

11.3 Primary Agent Exits or Node Fails

If the Failover Manager Primary agent crashes or the node fails, a Standby agent will detect the failure and (if appropriate) initiate a failover.

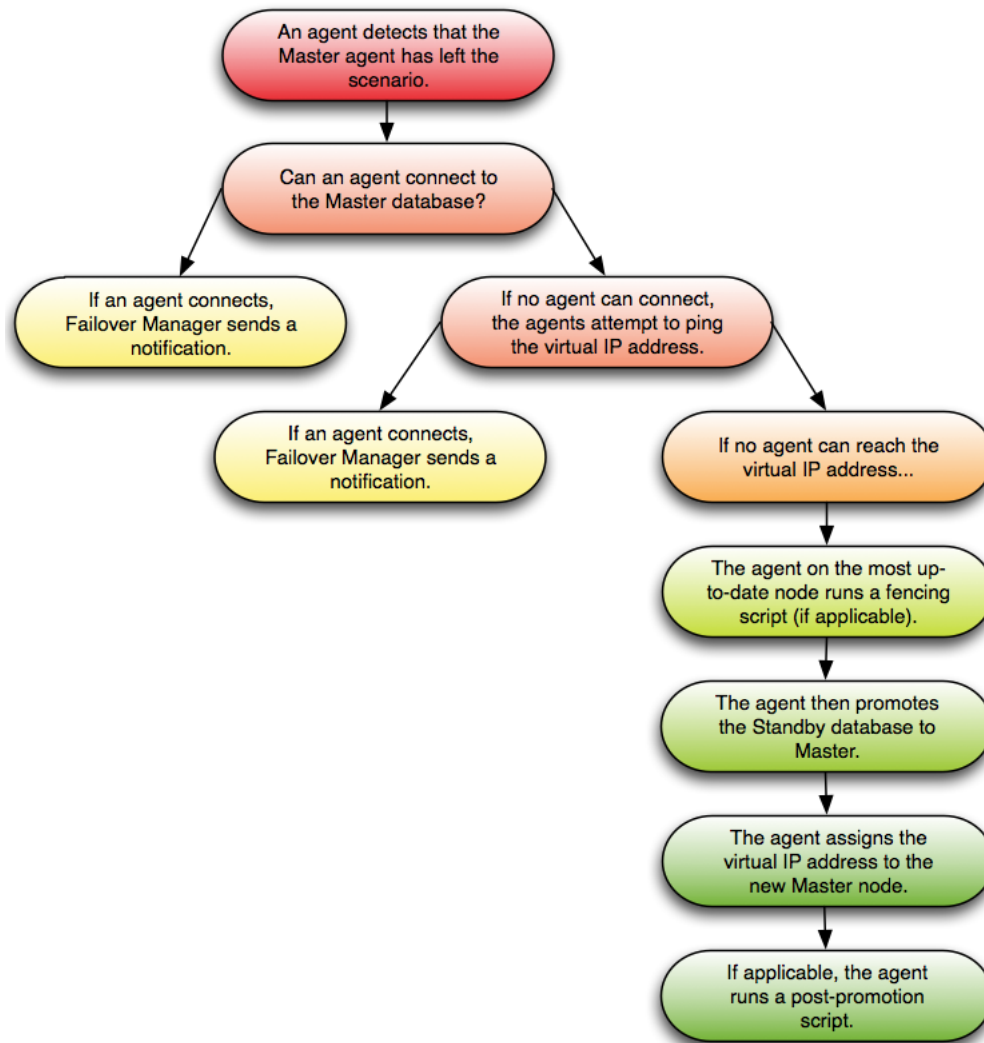


Fig. 3: *Confirming the failure of the Primary Agent.*

If an agent detects that the Primary agent has left, all agents attempt to connect directly to the Primary database. If any agent can connect to the database, an agent sends a notification about the failure of the Primary agent. If no agent can connect, the agents attempt to ping the virtual IP address to determine if it has been released.

If no agent can reach the virtual IP address or the database server, Failover Manager starts the failover process. The Standby agent on the most up-to-date node runs a fencing script (if applicable), promotes the Standby database to Primary database, and assigns the virtual IP address to the

Standby node; if applicable, the agent runs a post-promotion script. Any additional Standby nodes are configured to replicate from the new primary unless `auto.reconfigure` is set to `false`.

If this scenario has occurred because the primary has been isolated from network, the Primary agent will detect the isolation and release the virtual IP address and create the `recovery.conf` file. Failover Manager will perform the previously listed steps on the remaining nodes of the cluster.

To recover from this scenario without restarting the entire cluster, you should:

1. Restart the original Primary node.
2. Bring the original Primary database up as a Standby node.
3. Start the service on the original Primary node.

Please note that stopping an agent does not signal the cluster that the agent has failed.

11.4 Standby Agent Exits or Node Fails

If a Standby agent exits or a Standby node fails, the other agents will detect that it is no longer connected to the cluster.

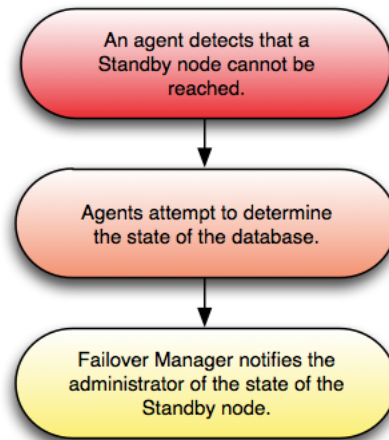


Fig. 4: *Failure of Standby Agent.*

When the failure is detected, the agents attempt to contact the database that resides on the node; if the agents confirm that there is a problem, Failover Manager sends the appropriate notification to the administrator.

If there is only one Primary and one Standby remaining, there is no failover protection in the case of a Primary node failure. In the case of a Primary database failure, the Primary and Standby agents can agree that the database failed and proceed with failover.

11.5 Dedicated Witness Agent Exits / Node Fails

The following scenario details the actions taken if a dedicated Witness (a node that is not hosting a database) fails.

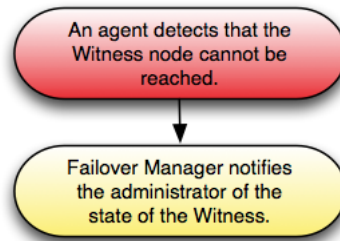


Fig. 5: *Confirming the Failure of a dedicated Witness.*

When an agent detects that the Witness node cannot be reached, Failover Manager notifies the administrator of the state of the Witness.

Note: If the witness fails and the cluster only has two nodes, then there is no failover protection because the standby node has no way to know if the primary failed or was disconnected. In a two node cluster, if the primary database fails but the nodes are still connected, failover will still occur since the standby can confirm the condition of the primary database.

11.6 Nodes Become Isolated from the Cluster

The following scenario details the actions taken if one or more nodes (a minority of the cluster) become isolated from the majority of the cluster.

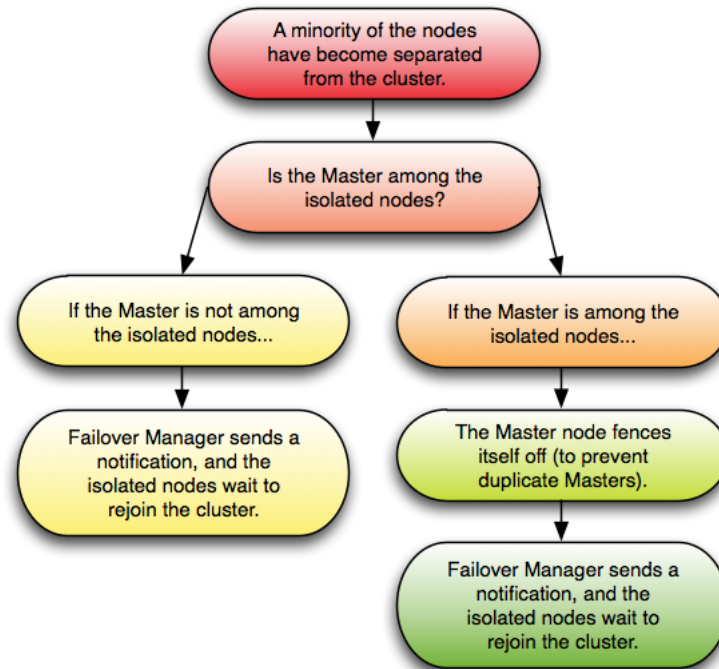


Fig. 6: *If members of the cluster become isolated.*

If one or more nodes (but less than half of the cluster) become isolated from the rest of the cluster, the remaining cluster behaves as if the nodes have failed. The agents attempt to discern if the Primary node is among the isolated nodes; if it is, the Primary fences itself off from the cluster, while a Standby node (from within the cluster majority) is promoted to replace it. Other Standby nodes are configured to replicate from the new primary unless `auto.reconfigure` is set to `false`.

Failover Manager then notifies an administrator, and the isolated nodes rejoin the cluster when they are able. When the nodes rejoin the cluster, the failover priority may change.

Upgrading an Existing Cluster

Failover Manager provides a utility to assist you when upgrading a Failover Manager cluster. To upgrade an existing cluster, you must:

1. Install Failover Manager 4.0 on each node of the cluster. For detailed information about installing Failover Manager, see *Installing Failover Manager*.
2. After installing Failover Manager, invoke the `efm upgrade-conf` utility to create the `.properties` and `.nodes` files for Failover Manager 4.0. The Failover Manager installer installs the upgrade utility (*efm upgrade-conf*) to the `/usr/edb/efm-4.0/bin` directory. To invoke the utility, assume root privileges, and invoke the command:

```
efm upgrade-conf <cluster_name>
```

The `efm upgrade-conf` utility locates the `.properties` and `.nodes` files of pre-existing clusters and copies the parameter values to a new configuration file for use by Failover Manager. The utility saves the updated copy of the configuration files in the `/etc/edb/efm-4.0` directory.

3. Modify the `.properties` and `.nodes` files for EFM 4.0, specifying any new preferences.

Use your choice of editor to modify any additional properties in the `properties` file (located in the `/etc/edb/efm-4.0` directory) before starting the service for that node. For detailed information about property settings, see *The Cluster Properties File*.

Note: As of version 3.6, `db.bin` is a required property. When modifying the `properties` file, ensure that the `db.bin` property specifies the location of the Postgres `bin` directory.

4. Use a version-specific command to stop the old Failover Manager cluster; for example, you can use the following command to stop a version 3.10 cluster:

```
/usr/efm-3.10/bin/efm stop-cluster efm
```

5. Start the new *Failover manager service* (edb-efm-4.0) on each node of the cluster.

The following example demonstrates invoking the upgrade utility to create the `.properties` and `.nodes` files for a Failover Manager installation:

```
[root@localhost efm-4.0]# /usr/edb/efm-4.0/bin/efm upgrade-conf efm
Checking directory /etc/edb/efm-3.10
Processing efm.properties file

The following properties were added in addition to those in previous_
↳installed version:
notification.text.prefix
encrypt.agent.messages
standby.restart.delay

The following properties were renamed from those in previous installed_
↳version:
stop.failed.master => stop.failed.primary
master.shutdown.as.failure => primary.shutdown.as.failure
script.master.isolated => script.primary.isolated
stop.isolated.master => stop.isolated.primary
reconfigure.sync.master => reconfigure.sync.primary

Checking directory /etc/edb/efm-3.10
Processing efm.nodes file

db.password.encrypted re-encoded with stronger encryption.

Upgrade of files is finished. The owner and group for properties and_
↳nodes files have been set as 'efm'.
[root@localhost efm-4.0]#
```

If you are *using a Failover Manager configuration without sudo*, include the `-source` flag and specify the name of the directory in which the configuration files reside when invoking `upgrade-conf`. If the directory is not the configuration default directory, the upgraded files will be created in the directory from which the `upgrade-conf` command was invoked.

Please note: : If you are using a custom service script or unit file, you must manually update the file to reflect the new Failover Manager service name when you perform an upgrade.

12.1 Un-installing Failover Manager

After upgrading to Failover Manager 4.0, you can use your native package manager to remove previous installations of Failover Manager. For example, use the following command to remove Failover Manager 3.10 and any unneeded dependencies:

- On RHEL or CentOS 6.x or 7.x:

```
yum remove edb-efm310
```

- On RHEL or CentOS 8.x:

```
dnf remove edb-efm310
```

- On Debian or Ubuntu:

```
apt-get remove edb-efm310
```

- On SLES:

```
zypper remove edb-efm310
```

12.2 Performing a Database Update (Minor Version)

This section describes how to perform a quick minor database version upgrade. You can use the steps that follow to upgrade from one minor version to another (for example, from 10.1.5 to version 10.2.7), or to apply a patch release for a version.

You should first update the database server on each Standby node of the Failover Manager cluster. Then, perform a switchover, promoting a Standby node to the role of Primary within the Failover Manager cluster. Then, perform a database update on the old primary node.

On each node of the cluster you must perform the following steps to update the database server:

1. Stop the Failover Manager agent.
2. Stop the database server.
3. Update the database server.
4. Start the database service.
5. Start the Failover Manager agent.

For detailed information about controlling the Advanced Server service, or upgrading your version of Advanced Server, please see the EDB Postgres Advanced Server Guide, available at:

<https://www.enterprisedb.com/resources/product-documentation>

When your updates are complete, you can use the *efm set-priority* command to add the old primary to the front of the standby list, and then switchover to return the cluster to its original state.

CHAPTER 13

Troubleshooting

Authorization file not found. Is the local agent running?

If you invoke an EFM cluster management command and EFM is not running on the node, the `efm` command will display an error:

```
Authorization file not found. Is the local agent running?
```

Not authorized to run this command. User '<os user>' is not a member of the `efm` group.

You must have special privileges to invoke some of the `efm` commands documented in *Using the efm Utility*. If these commands are invoked by a user who isn't authorized to run them, the `efm` command will display an error:

```
Not authorized to run this command. User '<os user>' is not a member_
↳of the `efm` group.
```

Notification; Unexpected error message

If you receive a notification message about an unexpected error message, check the *lvariable_prod_name| log file* for an `OutOfMemory` message. Failover Manager runs with the default memory value set by this property:

```
# Extra information that will be passed to the JVM when starting the_
↳agent.
jvm.options=-Xmx128m
```

If you are running with less than 128 megabytes allocated, you should increase the value and restart the Failover Manager agent.

Confirming the OpenJDK version

Failover Manager is tested with OpenJDK; we strongly recommend using OpenJDK. You can use the following command to check the type of your Java installation:

```
# java -version
openjdk version "1.8.0_191"
OpenJDK Runtime Environment (build 1.8.0_191-b12)
OpenJDK 64-Bit Server VM (build 25.191-b12, mixed mode)
```

Configuring Streaming Replication

Configuring a replication scenario can be complex; for detailed information about configuration options, please see the PostgreSQL core documentation, available at:

<https://www.postgresql.org/docs/current/static/warm-standby.html#streaming-replication>

You may want to use a `.pgpass` file to enable md5 authentication for the replication user – this may or may not be the safest authentication method for your environment. For more information about the supported authentication options, please see the PostgreSQL core documentation at:

<https://www.postgresql.org/docs/current/static/client-authentication.html>

Note: From Version 3.10 onwards, EFM uses `pg_ctl` utility for standby promotion. You do not need to set the `trigger_file` or `promote_trigger_file` parameter for promotion of a standby server.

14.1 Limited Support for Cascading Replication

While Failover Manager does not provide full support for cascading replication, it does provide limited support for simple failover in a cascading replication scenario. Cascading replication allows a Standby node to stream to another Standby node, reducing the number of connections (and processing overhead) to the primary node.

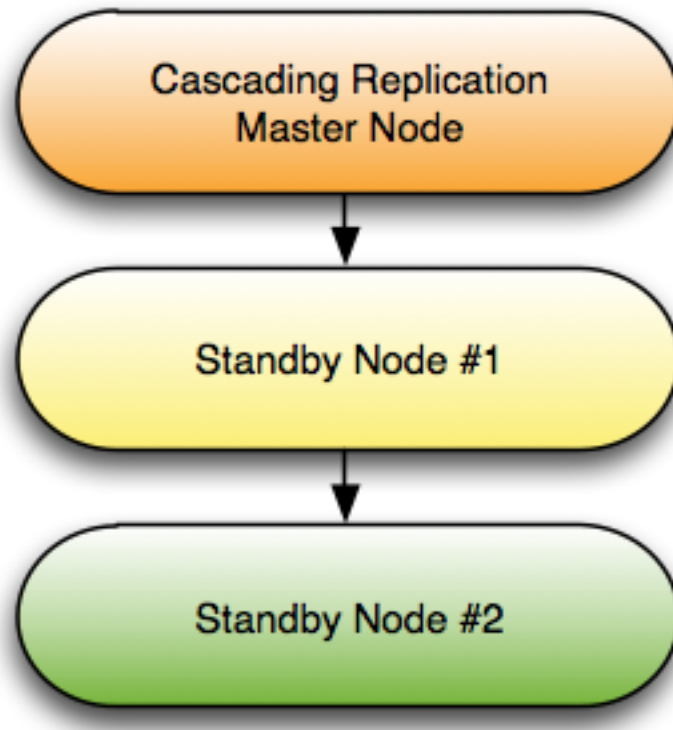


Fig. 1: *Cascading replication.*

For detailed information about configuring cascading replication, please see the PostgreSQL documentation at:

<https://www.postgresql.org/docs/current/static/warm-standby.html#cascading-replication>

To use Failover Manager in a cascading replication scenario, you should modify the cluster properties file, setting the following property values on Standby Node #2:

```
promotable=false
auto.reconfigure=false
```

In the event of a Failover, Standby Node #1 will be promoted to the role of Primary node. Should failover occur, Standby Node #2 will continue to act as a read-only replica for the new Primary node until you take actions to manually reconfigure the replication scenario to contain 3 nodes.

In the event of a failure of Standby Node #1, you will not have failover protection, but you will receive an email notifying you of the failure of the node.

Please note that performing a switchover and switch back to the original primary may not preserve the cascading replication scenario.

Configuring SSL Authentication on a Failover Manager Cluster

The following steps enable SSL authentication for Failover Manager. Please note that all connecting clients will be required to use SSL authentication when connecting to any database server within the cluster; you will be required to modify the connection methods currently used by existing clients.

To enable SSL on a Failover Manager cluster, you must:

1. Place a `server.crt` and `server.key` file in the `data` directory (under your Advanced Server installation). You can purchase a certificate signed by an authority, or create your own self-signed certificate. For information about creating a self-signed certificate, see the PostgreSQL core documentation at:

<https://www.postgresql.org/docs/10/static/ssl-tcp.html#ssl-certificate-creation>

2. Modify the `postgresql.conf` file on each database within the Failover Manager cluster, enabling SSL:

```
ssl=on
```

After modifying the `postgresql.conf` file, you must restart the server.

3. Modify the `pg_hba.conf` file on each node of the Failover Manager cluster, adding the following line to the beginning of the file:

```
hostnossl all all all reject
```

The line instructs the server to reject any connections that are not using SSL authentication; this enforces SSL authentication for any connecting clients. For information about

modifying the `pg_hba.conf` file, see the PostgreSQL core documentation at:

<https://www.postgresql.org/docs/10/static/auth-pg-hba-conf.html>

4. After placing the `server.crt` and `server.key` file in the data directory, convert the certificate to a form that Java understands; you can use the command:

```
openssl x509 -in server.crt -out server.crt.der -outform der
```

For more information, visit:

<https://jdbc.postgresql.org/documentation/94/ssl-client.html>

5. Then, add the certificate to the Java trusted certificates file:

```
keytool -keystore $JAVA_HOME/lib/security/cacerts -alias  
<alias_name> -import -file server.crt.der
```

Where

`$JAVA_HOME` is the home directory of your Java installation.

`<alias_name>` can be any string, but must be unique for each certificate.

You can use the `keytool` command to review a list of the available certificates or retrieve information about a specific certificate. For more information about using the `keytool` command, enter:

```
man keytool
```

The certificate from each database server must be imported into the trusted certificates file of each agent. Note that the location of the `cacerts` file may vary on each system. For more information, visit:

<https://jdbc.postgresql.org/documentation/94/ssl-client.html>

6. Modify the *efm.properties file* on each node within the cluster, setting the `jdbc.sslmode` property.

CHAPTER 16

Conclusion

EDB Postgres Failover Manager Guide

Copyright © 2013 - 2020 EnterpriseDB Corporation.

All rights reserved.

EnterpriseDB® Corporation

34 Crosby Drive, Suite 201, Bedford, MA 01730, USA

T +1 781 357 3390 F +1 978 467 1307 E

info@enterprisedb.com

www.enterprisedb.com

- EnterpriseDB and Postgres Enterprise Manager are registered trademarks of EnterpriseDB Corporation. EDB and EDB Postgres are trademarks of EnterpriseDB Corporation. Oracle is a registered trademark of Oracle, Inc. Other trademarks may be trademarks of their respective owners.
- EDB designs, establishes coding best practices, reviews, and verifies input validation for the logon UI for EDB Postgres product where present. EDB follows the same approach for additional input components, however the nature of the product may require that it accepts freeform SQL, WMI or other strings to be entered and submitted by trusted users for which limited validation is possible. In such cases it is not possible to prevent users from entering incorrect or otherwise dangerous inputs.
- EDB reserves the right to add features to products that accept freeform SQL, WMI or other potentially dangerous inputs from authenticated, trusted users in the future, but will ensure

all such features are designed and tested to ensure they provide the minimum possible risk, and where possible, require superuser or equivalent privileges.

- EDB does not warrant that we can or will anticipate all potential threats and therefore our process cannot fully guarantee that all potential vulnerabilities have been addressed or considered.

A

Adding a Node to a Cluster, 55
admin.port, 27
application.name, 33
auto.allow.hosts, 31
auto.failover, 32
auto.reconfigure, 32
auto.resume.period, 36

B

bind.address, 26

C

CentOS Installation, 8
Changing the priority of a Standby, 56
check.vip.before.promotion, 37
Conclusion, 111
Configuring Failover Manager, 17
Configuring SSL Authentication on a Failover Manager Cluster, 109
Configuring Streaming Replication, 106
Controlling Logging, 77
Controlling the Failover Manager Service, 74
custom.monitor.interval, 40
custom.monitor.safe.mode, 40
custom.monitor.timeout, 40

D

db.bin, 23

db.config.dir, 24
db.data.dir, 23
db.database, 22
db.password.encrypted, 22
db.port, 22
db.reuse.connection.count, 31
db.service.name, 23
db.service.owner, 23
db.user, 22
Debian Installation, 12

E

efm --help, 73
efm allow-node, 70
efm cluster-status, 70
efm disallow-node, 70
efm encrypt, 72
efm node-status-json, 73
efm promote, 72
efm resume, 72
efm set-priority, 72
efm stop-cluster, 73
efm upgrade-conf, 73
efm.loglevel, 43
enabling_syslog, 78
encrypt.agent.messages, 29
Encrypting Your Database Password, 43
Extending Failover Manager Permissions, 47
external.address, 27

F

Failover Manager Overview, 3
 file.log.enabled, 42
 from.email, 25

I

Installing Failover Manager, 8
 is.witness, 27

J

jdbc.sslmode, 24
 jgroups.loglevel, 43
 jvm.options, 43

L

Linux Installation, 8
 local.period, 27
 local.timeout, 27
 local.timeout.final, 27
 lock.dir, 42
 log.dir, 42

M

minimum.standbys, 35
 Monitoring a Failover Manager
 Cluster, 64
 Monitoring Streaming
 Replication with Postgres
 Enterprise Manager, 67
 Multiple agents on a single
 node, 60

N

Node Becomes Isolated, 98
 node.timeout, 28
 notification.level, 26
 notification.text.prefix, 26
 Notifications, 81

P

ping.server.command, 31
 ping.server.ip, 30
 Post Installation Tasks, 16
 Prerequisites, 5
 Primary Agent Exits, 94

Primary Database is Down, 91
 Primary Node Fails, 94
 primary.shutdown.as.failure, 29
 promotable, 32
 Promoting a node, 57

R

reconfigure.num.sync, 34
 reconfigure.sync.primary, 34
 recovery.check.period, 35
 remote.timeout, 28
 restart.connection.timeout, 35
 restore.command, 34
 RHEL Installation, 8

S

script.custom.monitor, 40
 script.db.failure, 39
 script.fence, 38
 script.load balancer.attach, 37
 script.load balancer.detach, 37
 script.notification, 26
 script.post.promotion, 38
 script.primary.isolated, 39
 script.remote.post.promotion, 40
 script.remote.pre.promotion, 39
 script.resumed, 39
 SLES Installation, 15
 stable.nodes.file, 31
 Standby Agent Exits, 96
 Standby Database is Down, 93
 Standby Node Fails, 96
 standby.restart.delay, 33
 Starting the EFM Cluster, 55
 stop.failed.primary, 29
 stop.isolated.primary, 29
 Stopping a Cluster, 59
 Stopping an agent, 58
 sudo.command, 41
 sudo.user.command, 41
 Supported Failover and Failure
 Scenarios, 91
 syslog.enabled, 42
 syslog.facility, 42
 syslog.host, 42

syslog.port, 42
syslog.protocol, 42

T

The Cluster Members File, 46
The Cluster Properties File, 17
Troubleshooting, 104

U

Ubuntu Installation, 12
update.physical.slots.period:, 30
Upgrading an Existing Cluster,
100
use.replay.tiebreaker, 33
user.email, 25
Using Failover Manager, 54
Using Failover Manager with
Virtual IP Addresses, 51
Using the efm Utility, 70
Using the service utility, 74
Using the systemctl utility, 75

V

virtual.ip, 36
virtual.ip.interface, 36
virtual.ip.prefix, 36
virtual.ip.single, 36

W

What's New, 2
Witness Agent Exits, 97
Witness Node Fails, 97