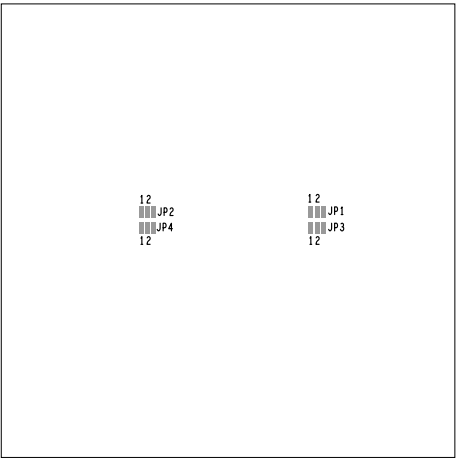


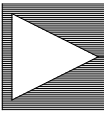
ASSEMBLY NOTES:

1. ADD SOLDER JUMPERS ON THE PARTS BELOW:

JUMPER	SOLDERED PINS	
JP1	1	2
JP2	1	2
JP3	1	2
JP4	1	2



SECONDARY SIDE



**ANALOG  
DEVICES**

WWM  
DIVISION  
804 WOBURN STREET  
WILMINGTON, MA 01887

SIZE	FSCM NO	DRAWING NUMBER	REV
C	24355	01-064107	B
SCALE	1 / 1		SHEET 2 OF 2