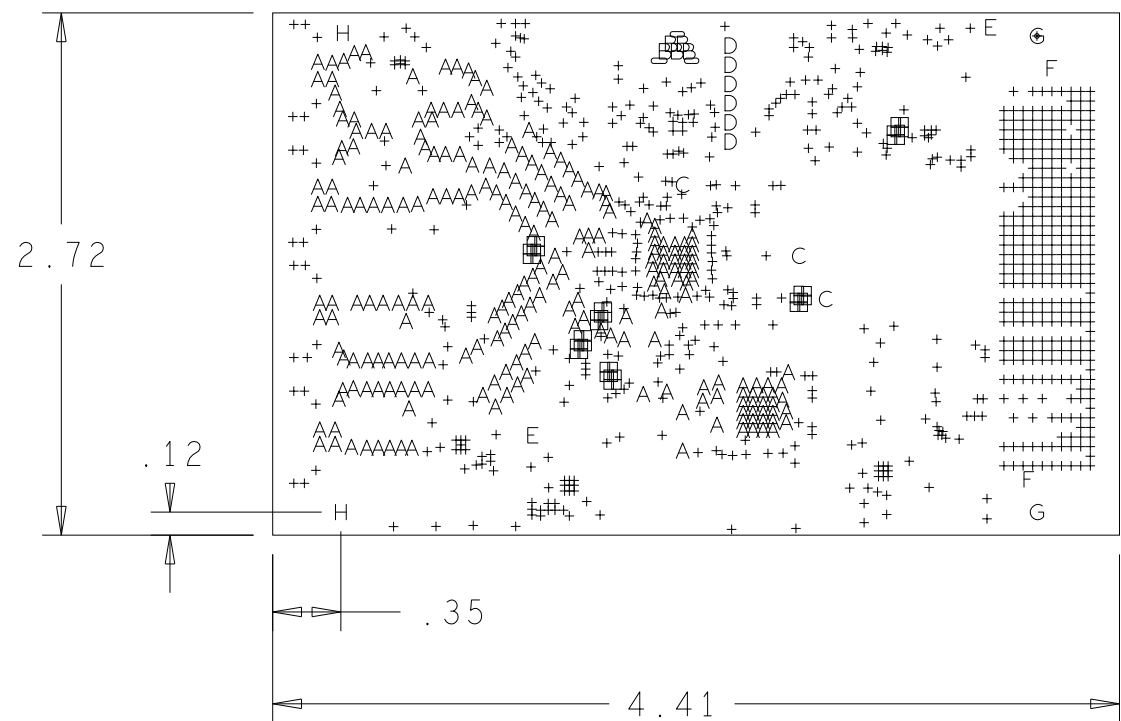


REVISIONS			
REV	DESCRIPTION	DATE	APPROVED
A	INITIAL RELEASE	29SEP14	L.W.



PRIMARY SIDE

NOTES:

- MATERIALS: FR-4, IN ACCORDANCE WITH IPC-L-130 (LATEST REV.). GLASS FABRIC BASE, EPOXY RESIN, FIRE RESISTANT.
- BONDING AGENT: PREIMPREGNATED B STAGE EPOXY GLASS CLOTH IN ACCORDANCE WITH IPC-L-109 (LATEST REV.).
- CLADDING: EXTERNAL LAYERS 1/2 OZ. COPPER, OVERPLATE TO 1 1/2 OZ. INTERNAL SIGNAL LAYERS 1 OZ. COPPER. INTERNAL PLANE LAYERS 1 OZ. COPPER.
- SOLDER MASK: SHALL BE LIQUID PHOTOIMAGABLE (LPI) APPLIED ON BOTH SIDES OVER BARE COPPER AND SHALL MEET IPC-SM-840 (LATEST REV.) CLASS 3. COLOR : BLUE.
- SILK SCREEN: SHALL BE PERMANENT NON-CONDUCTIVE EPOXY INK, COLOR WHITE.
- U.L. RATING: 94VO MINIMUM.

FABRICATION:

- REFER TO IPC-6010 SERIES (LATEST REV.), CLASS 2 FOR FABRICATION UNLESS OTHERWISE SPECIFIED.
- UNDIMENSIONED HOLES TO BE LOCATED WITHIN +/- .005 OF THEIR TRUE POSITION WITH RESPECT TO ARTWORK.
- PLATED HOLE WALL THICKNESS SHALL NOT BE LESS THAN .001 INCH MINIMUM AVERAGE, WITH NO READING LESS THAN .0008 BY CROSS SECTION.
- HOLE DIAMETERS APPLY AFTER PLATING.
- FINISHED CONDUCTOR WIDTHS SHALL NOT BE REDUCED FROM THE NOMINAL, INDICATED ON THE MASTER PATTERN, BY MORE THAN THE CONDUCTOR THICKNESS.
- MINIMUM DESIGN LINE WIDTH IS .005 INCH.
- MINIMUM DESIGN SPACING IS .005 INCH.
- BOARD/PANEL MUST MEET IPC-A-600 (LATEST REV.) CLASS 2 FOR FLATNESS.
- MFGR. TO LEGIBLY ETCH OR STAMP/SCREEN WITH PERMANENT NON-CONDUCTIVE INK ON SECONDARY SIDE IN A CLEAR AREA UNLESS OTHERWISE INDICATED;
A. U.L. CODE D. MFGR. LOGO
B. DATE CODE (STAMP) E. SUCCESSFUL ELECTRICAL BOARD TEST.
C. FLAMMABILITY RATING
- NON-FUNCTIONAL PADS MAY BE REMOVED FROM INNER SIGNAL LAYERS AT MFGR. DISCRETION.
- IF PAD SIZES PROVIDED ARE NOT LARGE ENOUGH TO MAINTAIN ANNULAR RING REQUIREMENT, MFGR. MAY TEAR DROP PADS TO MAINTAIN ANNULAR RING AT PAD TO CIRCUIT INTERFACE ONLY AND MUST INSURE ELECTRICAL INTEGRITY.
- REPAIRS PER IPC-R-700 ARE ALLOWED.
- MODIFICATIONS TO THE ARTWORK, OTHER THAN THOSE DESCRIBED ON THE FABRICATION DRAWING, ARE NOT ALLOWED WITHOUT WRITTEN AUTHORIZATION.
- FINISH: SURFACES SHALL HAVE ENIG FINISH PLATED WITH 2-6 MICROINCHES OF IMMERSION GOLD OVER 100-200 MICROINCHES OF ELECTROLESS NICKEL.
- VIAS TO BE NON-CONDUCTIVE EPOXY FILLED AND GROUND FLUSH PRIOR TO OVER PLATING.

10 LAYER STACKUP

	PRIMARY SILKSCREEN	
	PRIMARY SOLDER MASK	
	PRIMARY SIDE (LAYER 1)	
0.008"	GROUND PLANE (LAYER 2)	
0.006"	SIGNAL LAYER (LAYER 3)	
0.006"	GROUND PLANE (LAYER 4)	
0.003"	POWER LAYER (LAYER 5)	
0.003"	POWER PLANE (LAYER 6)	
0.003"	GROUND PLANE (LAYER 7)	
0.006"	SIGNAL LAYER (LAYER 8)	
0.006"	GROUND PLANE (LAYER 9)	
0.008"	SECONDARY SIDE (LAYER 10)	
	SECONDARY SOLDER MASK	
	SECONDARY SILKSCREEN	

NOMINAL FINISHED BOARD THICKNESS 0.063" +/- .007

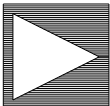
CHARACTERISTIC IMPEDANCE = 50 OHMS +/- 10%
ARTWORK LINE WIDTH FOR IMPEDANCE CONTROLLED LINES = 0.0155" FOR LAYER 1 AND 10.
IMPEDANCE CONTROLLED LINES = 0.0080" FOR LAYER 3 AND 8.

DIFFERENTIAL IMPEDANCE = 100 OHMS +/- 10%
ARTWORK LINE WIDTH FOR IMPEDANCE CONTROLLED LINES = 0.0100" FOR LAYER 1 AND 10.
IMPEDANCE CONTROLLED LINES = 0.0050" FOR LAYER 3 AND 8.

HOLE TOLERANCE

UNLESS SPECIFIED
PLATED: +/- .003
NON PLATED: +/- .001

FINISHED HOLES IN MILS				
ALL UNITS ARE IN MILS				
FIGURE	SIZE	PLATED	QTY	TOLERANCE/NOTES
□	6.0	PLATED	48	
+	10.0	PLATED	744	SEE NOTE 15
A	15.0	PLATED	232	SEE NOTE 15
B	28.0	PLATED	5	
C	40.0	PLATED	3	
D	45.0	PLATED	6	
E	63.0	PLATED	2	
F	50.0	NON-PLATED	2	
G	105.0	NON-PLATED	2	
H	125.0	NON-PLATED	2	
○	75.0x28.0	PLATED	2	
○	83.0x28.0	PLATED	1	

UNLESS OTHERWISE SPECIFIED DIMENSIONS ARE IN INCHES TOLERANCES DECIMALS FRACTIONS ANGLES .XX -.010 +/- 1/32 +/- 2 .XXX +/- .005	NCDRILL		 ANALOG DEVICES	HSC DIVISION 804 WOBURN STREET WILMINGTON, MA 01887					
	APPROVAL	DATE					TITLE AD9154 FMC EVALUATION BOARD		
	DRAWN BY P.M.A	25SEP14							
	DESIGNED								
CHECKED W.D.B	29SEP14								
MATERIAL									
FINISH	APPROVED		SIZE C	FSCM NO	DRAWING NUMBER HSC 14024	REV A			
	MFG ENGINEER								
DO NOT SCALE DWG			SCALE	1/1	SHEET 1 OF 1				